



Warranty

THIS WARRANTY IS VALID IN AUSTRALIA AND NEW ZEALAND ONLY.

Each Steelcraft unit is thoroughly inspected in our Quality Assurance department prior to delivery. In the unlikely case that you find any material or workmanship that effects the units normal operation, we will repair the unit free of charge within 12 months of purchase. You are required to present your receipt as proof of purchase. For all concerns with your product please contact our Customer Service Team.

CUSTOMER SERVICE

1300 303 330 - Australia

0508 688 822 - New Zealand

Please read **all** the information carefully before using this product. This warranty does not apply to failure due to improper care, or normal wear and tear caused by product use. We reserve the right to inspect the unit. You may be charged for repairs if the product has been damaged accidentally.

This warranty does not apply to a high chair used for commercial purposes.

Your new product has been manufactured to comply with the Australian Standard AS 4684-2009.

Distributed by:

AUSTRALIA

BRITAX CHILDCARE PTY.LTD.
A Britax International company.
(Incorporated in Victoria)
A.B.N. 55 006 773 600
99 Derby Road, Sunshine,
Victoria 3020, Australia
Phone: (03) 9288 7288
Fax: (03) 9311 5798

Due to our continuing program of development, Britax reserves the right to alter the specifications, colour or design without any further notice.

The Steelcraft trademark is the property of Britax Childcare Pty. Ltd-Australia.
Visit the Britax website at: www.britax.com.au or email us at au-custserv@britax.com

Due to the variations in the style and design of our products the illustrations used in this instruction booklet are generic.

©2010 Copyright Britax Childcare Pty. Ltd. Australia

INSTRUCTION MANUAL



Moda Hi-Lo High chair

KEEP INSTRUCTIONS IN A SAFE PLACE FOR FUTURE REFERENCE



READ THESE INSTRUCTIONS CAREFULLY AND KEEP THEM FOR FUTURE REFERENCE. THE CORRECT USE AND MAINTENANCE OF THIS PRODUCT IS ESSENTIAL.

WARNING THE CHILD SHOULD BE SECURED IN THE HIGH CHAIR AT ALL TIMES BY THE HARNESS, EITHER IN THE RECLINING OR UPRIGHT POSITION. THE TRAY IS NOT DESIGNED TO HOLD THE CHILD IN THE CHAIR. IT IS RECOMMENDED THAT THE HIGH CHAIR BE USED IN THE UPRIGHT POSITION ONLY BY CHILDREN CAPABLE OF RELIABLY AND CONSISTENTLY SITTING UPRIGHT UNASSISTED.

WARNING PREVENT SERIOUS INJURY OR DEATH FROM FALLS OR SLIDING OUT.

WARNINGS

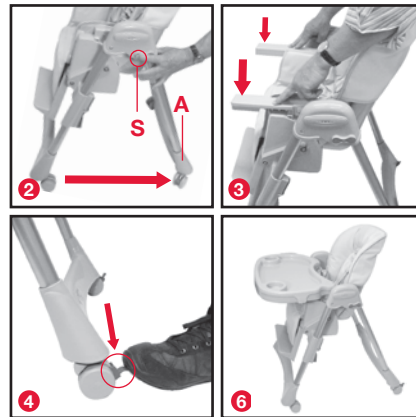
- FOLLOW THE MANUFACTURER'S INSTRUCTIONS.
- DO NOT LEAVE CHILDREN UNATTENDED.
- THE HARNESS MUST ALWAYS BE USED AND CORRECTLY FITTED.- MOST INJURIES FROM THE HIGH CHAIRS ARE CAUSED BY FALLS.
- POSITION THE HIGH CHAIR AWAY FROM SOLID STRUCTURES AND BENCHES TO AVOID INJURIES CAUSED BY FALLS AND ACCESS TO DANGEROUS ITEMS.
- Double check assembly before placing child into high chair.
- The weight of the child using this product is not exceed 15kg.
- Always keep your child in view whilst using the high chair.
- Always apply the brakes when not moving the high chair.
- Use on a flat, even and horizontal floor and never use near stairs.
- Do not elevate the high chair on any structure or table.
- Do not allow child to stand on the seat.
- Never carry the high chair with the child in it.
- Do not use the high chair without the tray and always ensure the tray is secure on the armrests. The tray is not designed to hold the child in the chair.
- When making adjustments to the high chair, ensure that you and your child's body, fingers and toes are clear of any moving parts on the high chair, otherwise they may be injured.
- Position the high chair away from furniture, walls, hot surfaces and liquids, window covering cords, and electrical cords and position the high chair away from furniture when the chair is not being used at a table.

THIS PRODUCT IS NOT INTENDED FOR COMMERCIAL USE.

NOTES

TO OPEN THE HIGHCHAIR

1. Stand behind the Highchair.
2. Locate the front RED open/close lock buttons S. Squeeze in and hold and at the same time pulling the rear moulding A back with your foot to assist with opening the Highchair. Make sure the frame has locked into the open position.
3. Rotate the tray armrests down until they are locked into position.
4. Lock the rear wheels before placing a child in the Highchair. This will help prevent the Highchair from rolling away.
5. Place the child in the Highchair and secure with the harness.
6. Attach the tray.



WARNING:
DO NOT ADJUST WITH THE CHILD IN THE CHAIR.

CARE AND MAINTENANCE

To prolong the life of your nursery product keep it clean and do not leave it in direct sunlight for extended periods.

Trim may be cleaned using a damp sponge with soap or mild detergent. Allow to completely dry preferably away from direct sunlight before storing.

In some climates the trims may be affected by mould and mildew. To help prevent this occurring, do not store the product if it is damp or wet. Always store the product in a well ventilated area.

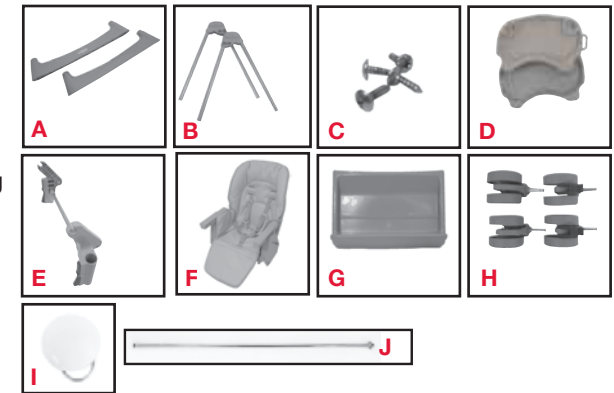
To maintain the safety of your nursery product, check regularly and seek prompt repair for bent, torn, worn or broken parts. Use only those parts and accessories approved by the manufacturer.

Always check parts regularly for tightness of screws and other fasteners - tighten if required.

Discontinue using your high chair should any part become damaged or broken.

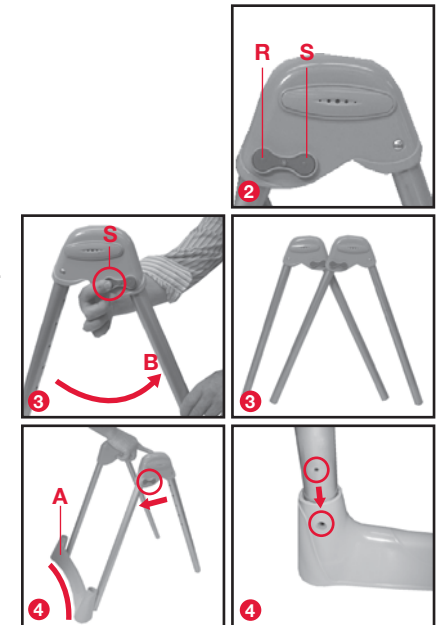
PARTS LIST

- A 2 x lower leg moulding
- B 2 x legs
- C 4 x philips head screws
- D 1 x base tray and
- E 1 x removable tray
- F 1 x Seat Assembly moulding
- G 1 x Seat Assembly
- H 1 x Footrest moulding
- I 4 x Castor Wheels
- J 1 x Snap fastener
- K 1 x Seat support bar

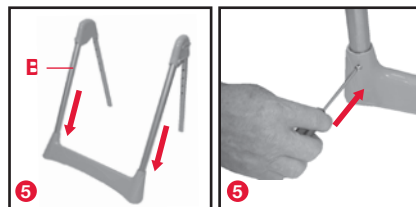


ASSEMBLY - TO ASSEMBLE THE FRAME AND SEAT ASSEMBLY Moulding TO THE Leg TUBES

1. Remove all parts from the box and layout on a flat surface.
2. To begin assembly, for each leg tube set, you need to spread the leg tubes apart. Locate the RED leg open/close lock button S, on the moulding above the leg tubes.
3. Press in and hold button S, and at the same time pull leg tube B across until it locks into position. Repeat for the other pair of leg tubes.
4. With the open/close lock buttons on the outside, and facing to the rear, position one lower leg moulding A, behind the leg tubes. Make sure the curved edge of the moulding is on the outside of the frame. This will help align the two screw holes in the moulding with the screw holes on the inside of the legs when fitted together.

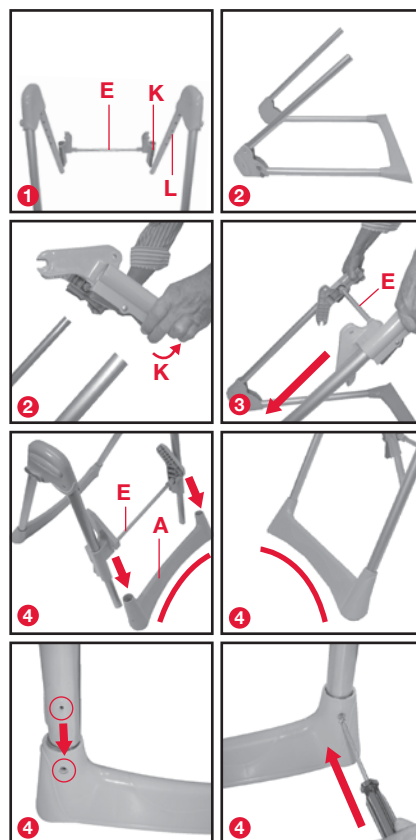


- Now insert both leg tubes B, into the moulding and using the screws provided, screw the leg tubes and moulding together.



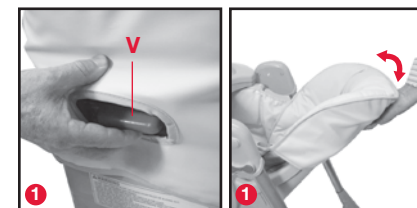
TO ASSEMBLE AND FIT THE SEAT TO THE FRAME

- Place the seat assembly moulding E in front of the leg tubes. The RED adjusting latches K, must be facing towards the leg tubes as shown. The height adjusting holes L, in the leg tubes should also be visible to you.
- Insert both front leg tubes into seat assembly moulding E. For easy assembly of this seat assembly moulding, rotate the frame over and lay it down. Squeeze and hold in the bottom section of the RED adjusting latches K together and slide the seat assembly moulding up the leg tubes to the lowest height adjusting hole position.
- Now release the adjusting latches K, so the seat assembly moulding locking pins can engage into the height adjusting holes. Make sure the locking pins are engaged. Assembly E should be locked into the holes. Now stand the frame upright.
- Now fit the other front leg tube moulding A to the leg tubes with the screws provided. Make sure the curved edge is on the outside. This will help align the two screw holes in the moulding with the screw holes on the inside of the legs when fitted together.



TO ADJUST OR RECLINE THE HIGHCHAIR SEAT

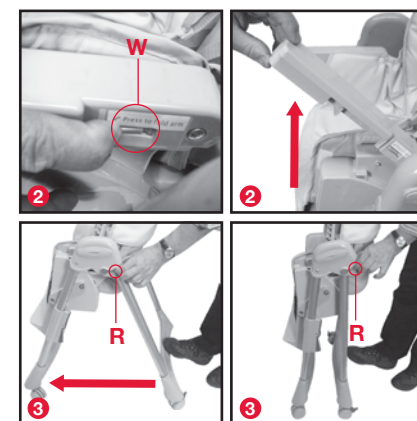
- Locate the backrest adjusting lever V, on the back of the Highchair. Squeeze in and hold and adjust up or down to the desired position.



WARNING:
DO NOT ADJUST WITH THE CHILD IN THE CHAIR.

TO FOLD THE HIGHCHAIR

- Remove the tray from the Highchair.
- Release and raise the armrests up by pressing in release tabs W and folding back the armrests.
- Stand behind the Highchair and locate the rear RED open/close lock buttons R on each side of the Highchair above the leg tubes.
- Press in and hold both rear open/close lock buttons R. At the same time push the lower leg moulding A forward with your foot to assist with the folding. Close and lock the frame together.

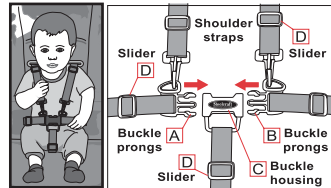


WARNING:
DO NOT ADJUST WITH THE CHILD IN THE CHAIR.

TO SECURE YOUR CHILD

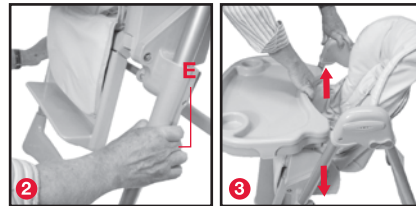
WARNING: USE THIS HARNESS AT ALL TIMES.

A five-point harness is provided to restrain your child. To secure the child in the harness, push buckle (A) and (B) into the buckle housing (C) until the buckle prongs snap into position. Carefully adjust the harness by pulling the slider (D) until the desired snug fit is achieved in the lap, shoulder and crotch straps. Always adjust the harness when changing the seating position of the child. To release the buckle, squeeze the top and bottom prongs.



ADJUSTING THE HIGHCHAIR HEIGHT

1. Remove the child from the Highchair.
2. To lower the Highchair seat, locate the height adjusting latches E. Squeeze them both in together and adjust the Highchair down to the desired height position.
3. To raise the Highchair seat, use the height adjusting latches. Other options are to raise the Highchair seat, is by pulling up by the tray. Or hold the Highchair seat and pull it up.
4. Ensure the height adjustment latches on both sides have locked into place before placing a child into the Highchair.

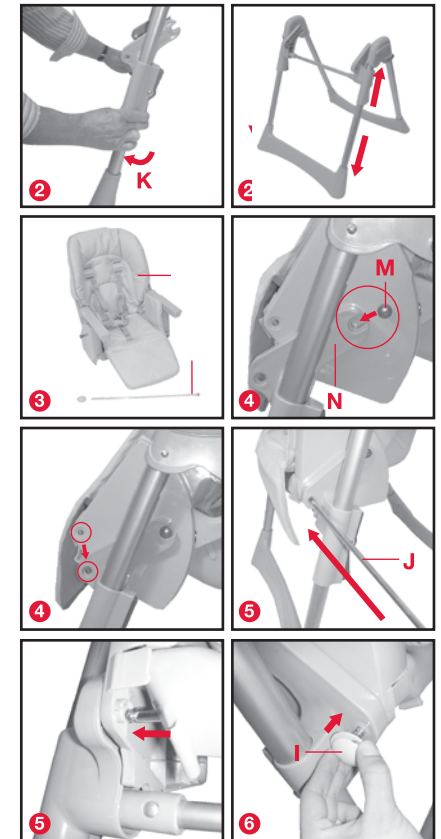


WARNING:

DO NOT ADJUST WITH THE CHILD IN THE CHAIR.

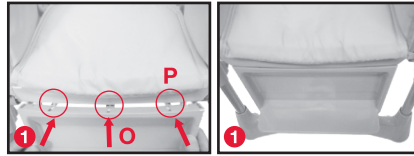
TO FIT THE HIGHCHAIR SEAT TO THE SEAT ASSEMBLY MOULDING

1. Raise the seat assembly moulding E to one of the higher positions for easier assembly.
2. To move the seat assembly moulding E up or down the leg tubes, squeeze in and hold the bottom section of the adjusting latches K to release the locking pins from the holes. Now slide the seat frame up or down to the desired height position and release the latches. Make sure the seat frame is securely engaged.
3. You will need the Highchair Seat F, Seat Support Bar J and Snap Fastener I, to complete this assembly.
4. Take seat F and connect the RED buttons M on both sides of the seat to the seat assembly moulding E. Do this by inserting the RED buttons M into the grooves in the seat frame/molding assembly arms N. Continue to hold the seat.
5. Now rotate seat forward and align the hole in the seat F with the hole in assembly arms N. Now insert the Seat support bar J. Push it all the way through the seat and out the other side of moulding arm N. You may need to help align the holes so the support bar can pass through.
6. Now take the Snap fastener I, and lock it onto the end of the support bar J. Hold the other end of the support bar and lock the Snap fastener I onto the support bar. You will need to squeeze the spring down to assist with the connection. Pull on the Snap fastener to make sure it is engaged.



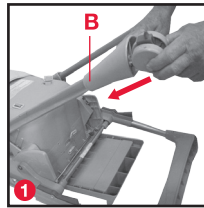
TO FIT THE FOOTREST

1. Align the footrest locating slots O with the seat connecting mouldings P. Push the footrest onto the seat mouldings until it locks on to the seat.



TO ATTACH THE WHEELS

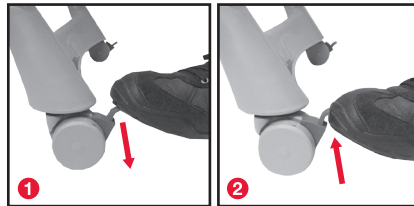
1. Attach the 4 wheels to the base of the Highchair.
2. Each wheel assembly is attached by inserting AND LOCKING the pin into the hole provided in the base of the lower leg mouldings B.
3. Two of the wheels have brakes and these are fitted to the rear of the Highchair. Align each wheel pin with the hole in the underside of moulding B and with some force, push in and lock the wheel into the moulding. Pull on the wheels to make sure they are locked in. Repeat if not locked in.
4. Fit the other two wheels to the front of the Highchair as above.



TO USE THE BRAKES

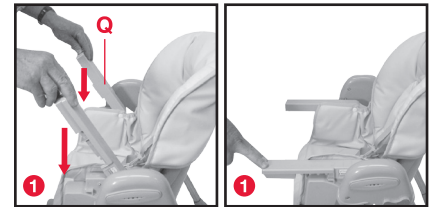
1. Press down the brake lever to lock the brakes.
2. Push up the brake lever to unlock the brakes.

WARNING:
ALWAYS APPLY THE BRAKES EXCEPT WHEN RELOCATING THE HIGH CHAIR.

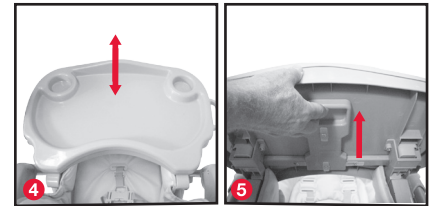


TO ATTACH, USE AND REMOVE THE TRAY

1. Rotate both tray armrests Q down and lock them into position.
2. To fit the tray, locate both tray latches T on the underside of the tray. Pull them both outwards and hold out. Align the armrest locators U with the armrests and slide the tray on. Release the latches and the tray should be engaged into one of three adjusting positions.
3. To adjust the tray forwards or backwards, pull the tray release latches outward, move the tray the desired position and release the latches to lock into position.



- The tray also features a 'one hand' tray release. This is located under the front edge of the tray.
4. Hold the tray with one hand and squeeze the latch towards you. This will release the side tray latches so you can remove or adjust the tray.
 5. To remove the tray, pull the tray latches outward and hold. Slide the tray of the armrests.



WARNING:
DO NOT ADJUST WITH THE CHILD IN THE CHAIR.

6. The main tray also comes with a removable second tray for easy cleaning.