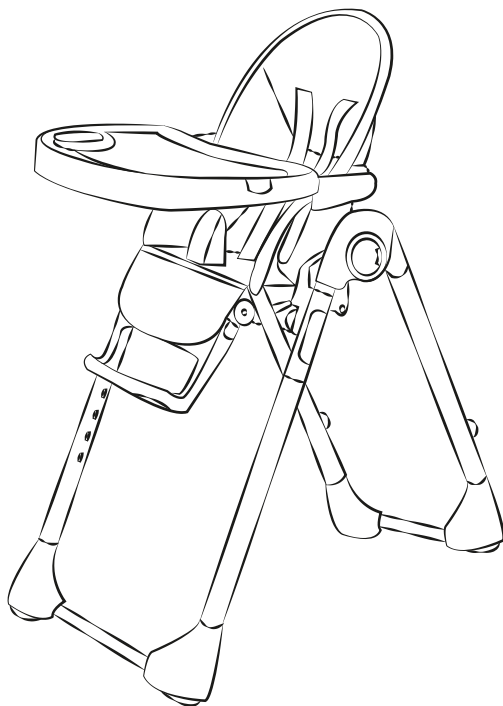


SteelcraftTM

MATISSE HI LO HIGHCHAIR



IMPORTANT: KEEP THIS BOOKLET IN A SAFE PLACE FOR FUTURE REFERENCE.

www.britax.com.au

Series No. Q1

WARNINGS

**ALWAYS FOLLOW THE MANUFACTURERS INSTRUCTIONS.
READ ALL INSTRUCTIONS CAREFULLY BEFORE ASSEMBLY AND USE
OF THIS HIGHCHAIR.
THE CORRECT USE AND MAINTENANCE OF THIS PRODUCT IS
ESSENTIAL.**



WARNING: THE CHILD SHOULD BE SECURED IN THE HIGHCHAIR AT ALL TIMES BY THE HARNESS, EITHER IN THE RECLINING OR UPRIGHT POSITION. THE TRAY IS NOT DESIGNED TO HOLD THE CHILD IN THE CHAIR. IT IS RECOMMENDED THAT THE HIGHCHAIR BE USED IN THE UPRIGHT POSITION ONLY BY CHILDREN CAPABLE OF RELIABLY AND CONSISTENTLY SITTING UPRIGHT UNASSISTED.



WARNINGS: TO PREVENT SERIOUS INJURY OR DEATH:

- FOLLOW THE MANUFACTURER'S INSTRUCTIONS.
- DO NOT LEAVE CHILDREN UNATTENDED.
- THE HARNESS MUST ALWAYS BE USED AND CORRECTLY FITTED.
- MOST INJURIES FROM THE HIGHCHAIR ARE CAUSED BY FALLS.
- POSITION THE HIGHCHAIR AWAY FROM SOLID STRUCTURES AND BENCHES TO AVOID INJURIES CAUSED BY FALLS AND ACCESS TO DANGEROUS ITEMS.
- Double check assembly before placing child into highchair.
- The weight of the child using this product is not to exceed 15kg.
- Always keep your child in view whilst using the highchair.
- Always apply the brakes when not moving the highchair.
- Do not allow children to stand on the seat.
- Use on a flat, even and horizontal floor and never use near stairs.
- Do not elevate the highchair on any structure or table.
- Do not allow child to stand on the seat.

WARNINGS

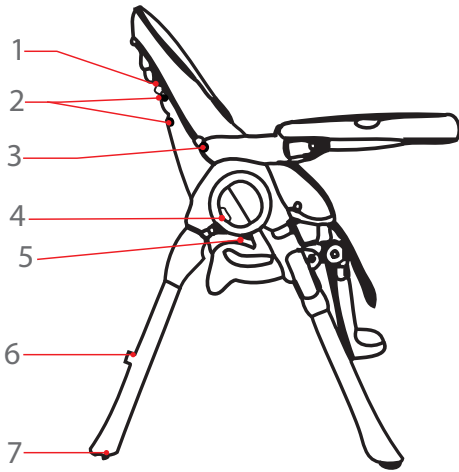


WARNINGS:

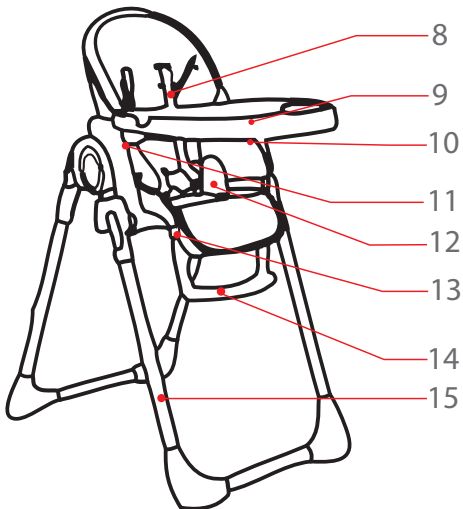
- Never carry the highchair with the child in it.
- Do not use the highchair without the tray and always ensure the tray is secure on the arm rests. The tray is not designed to hold the child in the chair.
- When making adjustments to the high chair, ensure that you and your child's body, fingers and toes are clear of any moving parts on the highchair, otherwise they may be injured.
- Position the highchair away from furniture, walls, hot surfaces and liquids, window covering cords, electrical cords and position the highchair away from furniture when the chair is not being used at a table.

THIS PRODUCT IS NOT INTENDED FOR COMMERCIAL USE.

PARTS LIST



1. Backrest recline lever
2. Shoulder harness clip slot
3. Seat cover retention hooks
4. Rear leg release button
5. Seat height adjustment latch
6. Tray storage hook
7. Castor

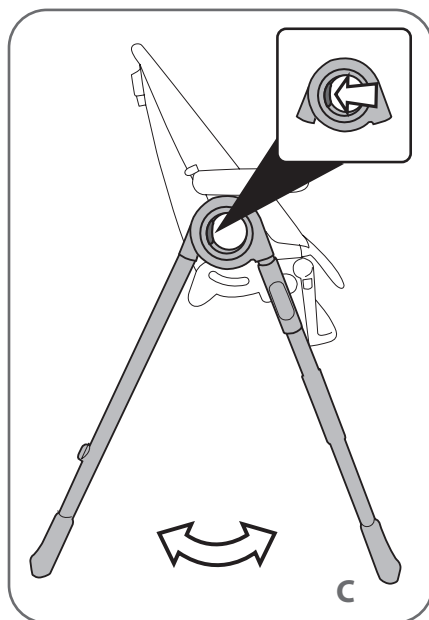
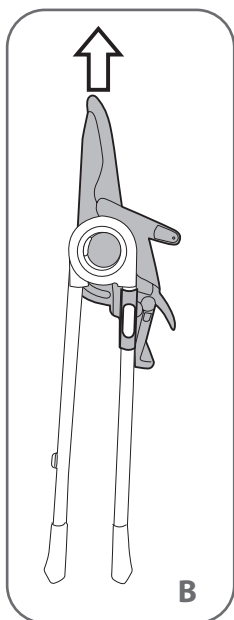
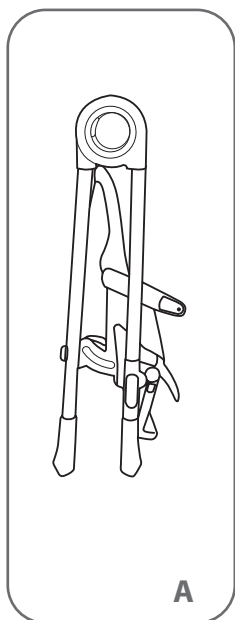


8. Five-Point harness
9. Tray
10. Tray release latch
11. Tray lock latch
12. Crotch guard
13. Footrest adjustment latch
14. Footrest
15. Leg

HIGHCHAIR ASSEMBLY

1. ASSEMBLING THE HIGHCHAIR

- A** Remove the highchair from the box.
- B** Raise the seat up to the highest position.
- C** Press in and hold both rear leg release buttons inside the side rings and at the same time pull the lower leg moulding back with your foot to assist with opening the high chair. Ensure the frame has locked in the open position.



HIGHCHAIR OPERATION

2. USING THE TRAY



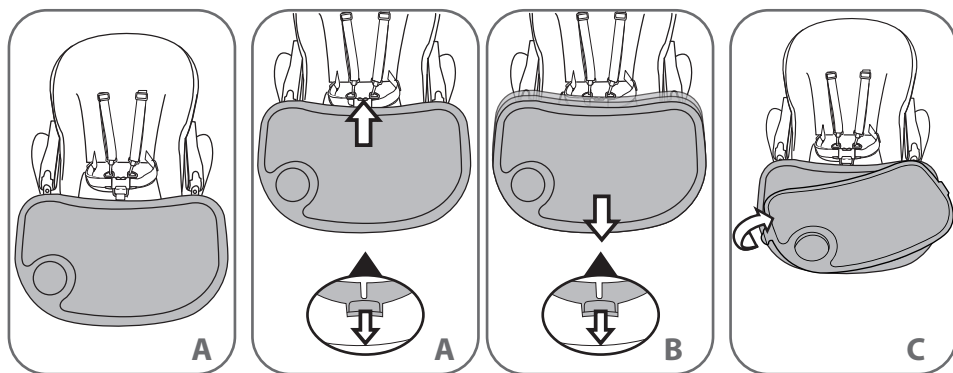
WARNING: THE TRAY IS NOT DESIGNED TO HOLD THE CHILD IN THE HIGH CHAIR. THE CHILD IS TO BE SECURED BY THE SAFETY HARNESS AT ALL TIMES WHILE IN THE HIGH CHAIR.

- A** To attach the tray, line up the bar on the tray with holes in the armrests. Pull the tray release latch under the tray outward and slide the tray in.
- B** To remove the tray, pull the tray release latch outward and slide the tray out of the armrests.
- C** The tray features a removable second tray for easy cleaning. Remove by releasing both tabs on the left and right side of the tray.

CAUTION: Do not force the tray against the child.

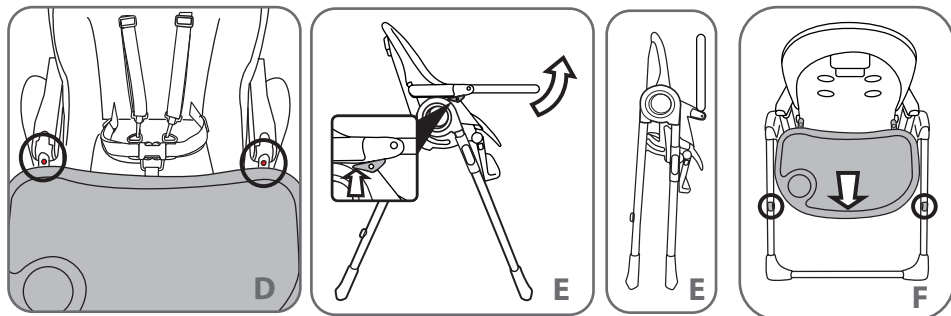
Ensure the child's hands are free from moving parts when the tray is being attached or removed to avoid pinching or entrapment.

Before using the tray, check it is securely locked onto the armrests by pulling on the tray.



HIGHCHAIR OPERATION

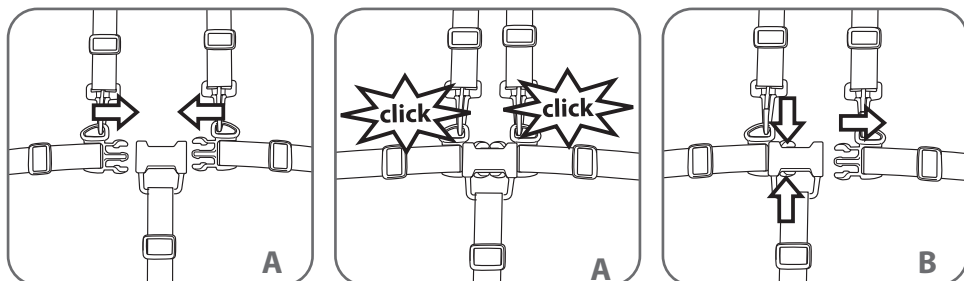
- D** The tray can be rotated up for easy storage. Pull out the tray to the furthest position (you can see the red dots on the tray bar).
- E** Push the tray lock latch up and lift the tray at the same time.
- F** The tray can be stored back of the high chair.



3. USING THE HARNESS

! **WARNING:** USE THE HARNESS AT ALL TIMES.

- A** A five point harness is provided to restrain your child.
To secure your child in the harness, follow the steps below.
Push the both waist buckle into the buckle housing until they are locked.
Adjust the harness by pulling the slider until the desired fit is achieved.
Always adjust the harness when changing the seating position of the child.
- B** To remove the child, release the buckle by squeezing the top and bottom buckle prongs, remove the shoulder straps and lift the child out of the highchair.

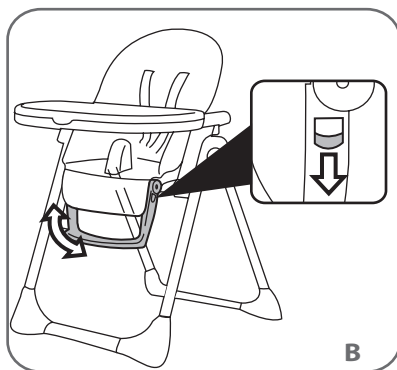
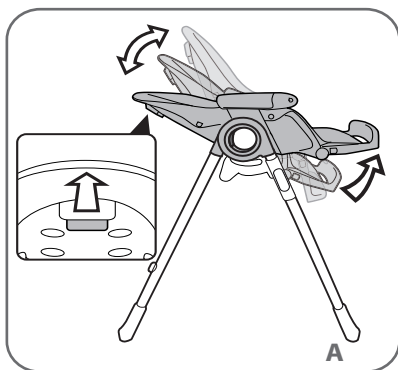


HIGHCHAIR OPERATION

! **WARNING:** DO NOT ADJUST WITH THE CHILD IN THE CHAIR.

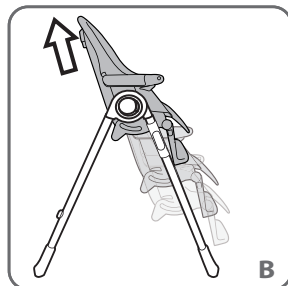
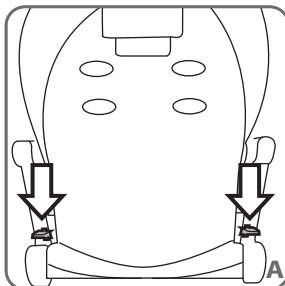
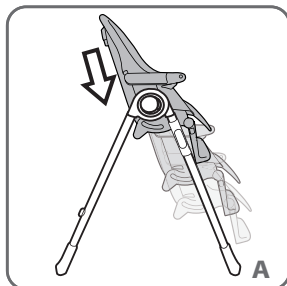
4. ADJUSTING THE BACKREST

- A** Pull backrest lever up to adjust backrest upwards and downwards.
- B** To adjust the footrest, just lift the footrest up for up position. For down position, push down footrest adjustment latches on both sides and pull down footrest at the same time.



5. ADJUSTING THE HEIGHT OF THE HIGHCHAIR

- A** To lower the seat, push down both seat height adjustment latches.
- B** To lift the seat height, just pull the seat up.

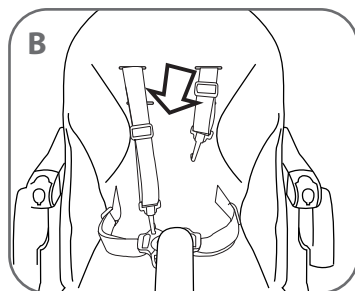
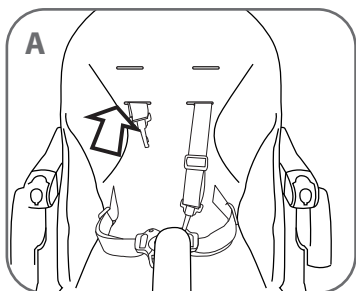


HIGHCHAIR OPERATION

6. TO ADJUST THE SHOULDER STRAPS

PLEASE NOTE: The shoulder straps can be positioned at two heights. Choose a shoulder strap height that is close to the child's shoulders.

- A** The high chair seat has 2 sets of harness slots at different heights to accommodate the child. To change the shoulder harness height, push the shoulder harness buckle & strap out of the current harness slot and through the back of the seat fabric.
- B** To reposition the harness, pull the shoulder harness buckle & strap through the desired slot. Adjust the harness length to fit the child.



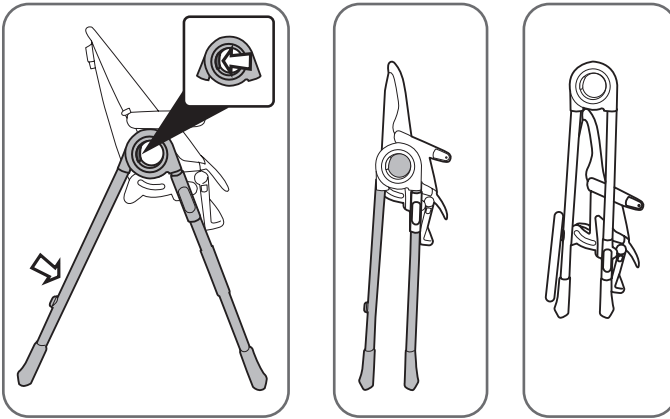
HIGHCHAIR OPERATION

7. FOLDING THE HIGHCHAIR



WARNING: REMOVE THE CHILD FROM THE HIGHCHAIR BEFORE

- A** Remove the child and tray from the highchair. Press in the rear leg release buttons. Lift rear of frame and fold forward. If you want to lower the seat please refer to page 8. Then store the tray at back as page 7.



6. USING THE HIGHCHAIR

- Always ensure you bend your knees where appropriate and take due care when lifting the highchair.
- Place the high chair on a horizontal, flat and even floor ensuring all wheels are in contact with the floor.
- The high chair must not be placed on a table or similar surface to elevate the child.
- Position the high chair away from potential hazards and other furniture or structures that the child may be able to grasp or push.
- Keep away from walls, kitchen benches, hot surfaces, hot liquids and electrical cords.

CARE AND MAINTENANCE

- To prolong the life of your highchair keep it clean and do not leave it in the direct sunlight for extended periods of time.
- Removable fabric covers and trims may be cleaned using warm water with a household soap or mild detergent. Allow it to dry fully, preferably away from the direct sunlight.
- Non removable fabric covers and trims may be spot cleaned using a damp sponge with soap or a mild detergent. Allow it to dry completely before folding or storing it away.
- In some climates the covers and trims may be affected by mould and mildew. To help prevent this occurring, do not fold or store the product if it is damp or wet. Always store the product in a well ventilated area.
- To maintain the safety of your nursery product, seek prompt repairs for bent, torn, worn or broken parts. Use only those parts and accessories approved by Steelcraft.
- Always check parts regularly for tightness of screws, nuts and other fasteners - tighten if required.
- If the highchair is not working correctly stop using the highchair and seek repair.

THIS PRODUCT IS NOT INTENDED FOR COMMERCIAL USE.

SteelcraftTM

BRITAX CHILDCARE PTY. LTD A Britax International company.
(Incorporated in Victoria) A.B.N. 55 006 773 600
Level 4, 650 Lorimer street, Port Melbourne, Victoria 3207, Australia
Phone: (03) 9288 7288 Fax: (03) 9311 5798

CUSTOMER SERVICE
1300 303 330 - Australia 0508 688 822 - New Zealand

Due to our continuing program of development, Britax reserves the right to alter the specifications, colour or design without any further notice.

The Steelcraft trademark is the property of Britax Childcare Pty.Ltd - Australia.

The Britax trademark is the property of Britax Childcare Holdings Limited - UK.

Visit the Britax website at: www.britax.com.au or email us at au-custserv@britax.com

Due to the variations in the style and design of our products the illustrations used in this instruction booklet are generic.

This product is designed to comply with the Australian standard AS4684-2009

2015 Copyright Britax Childcare Pty. Ltd. Australia

www.britax.com.au

Art No. 4002180_C