



britax
safe·n·sound

CONVERTIBLE CAR SEAT
WITH OPTIONAL ISOFIX COMPATIBILITY
Suitable for Birth to 4 years (approx)

Instructions for Installation & Use

Series No. 7200/A/2013



REARWARD FACING

Birth to 2-3
years (approx)



FORWARD FACING

12 months to 4
years (approx)



ISOFIX
COMPATIBLE

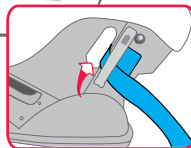
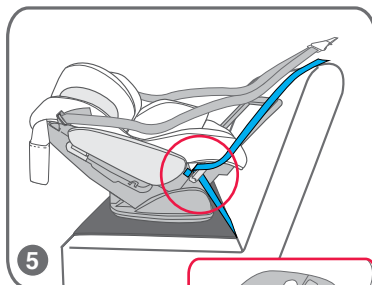
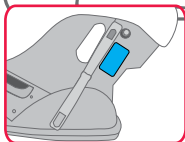
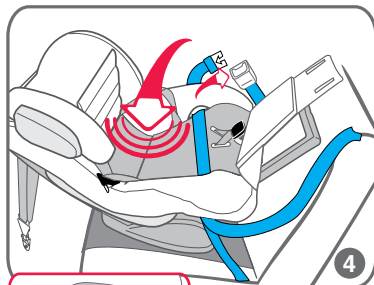
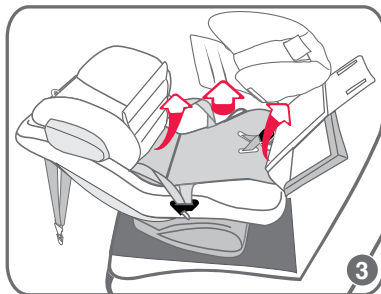
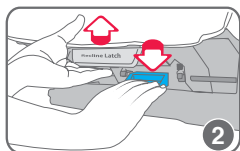
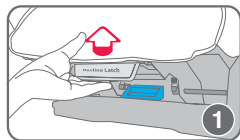
Optional Installation where fitted



IMPORTANT:

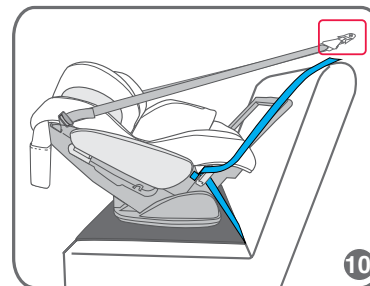
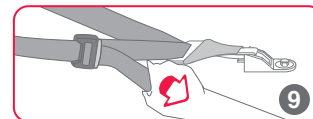
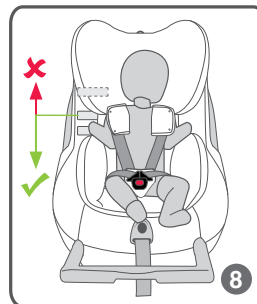
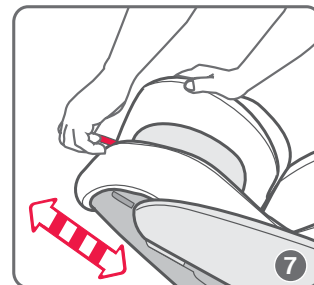
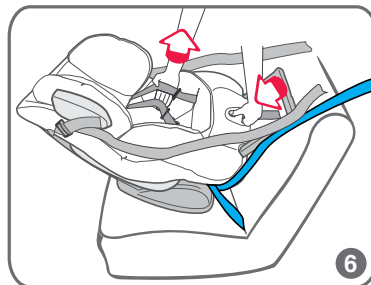
KEEP THIS BOOKLET IN THE PLACE PROVIDED ON THE CHILD RESTRAINT

SEATBELT QUICK SETUP REARWARD FACING



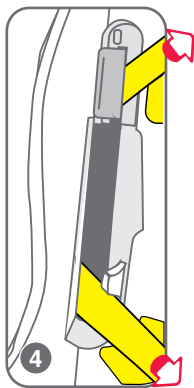
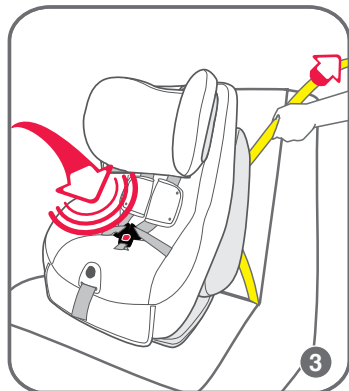
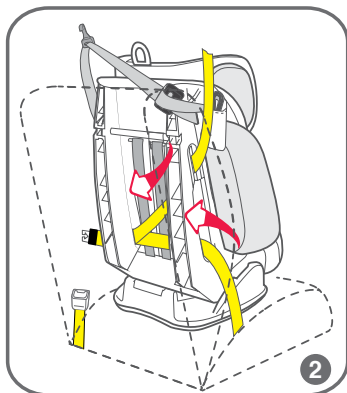
SEE PAGE 28 - 48 FOR FURTHER INFORMATION

SEATBELT QUICK SETUP REARWARD FACING



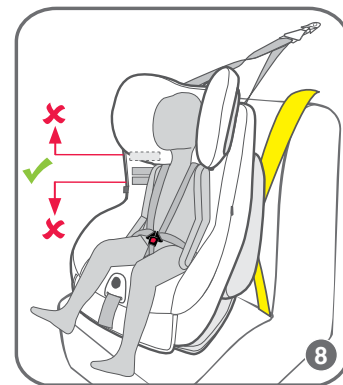
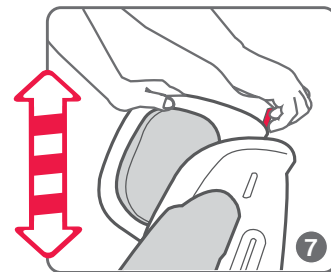
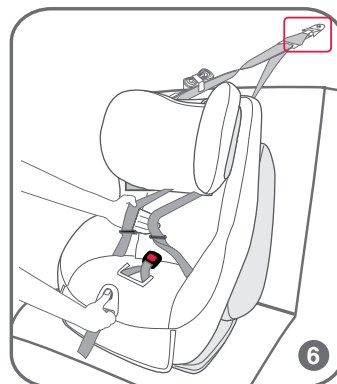
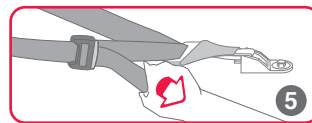
SEE PAGE 28 - 48 FOR FURTHER INFORMATION

SEATBELT QUICK SETUP FORWARD FACING



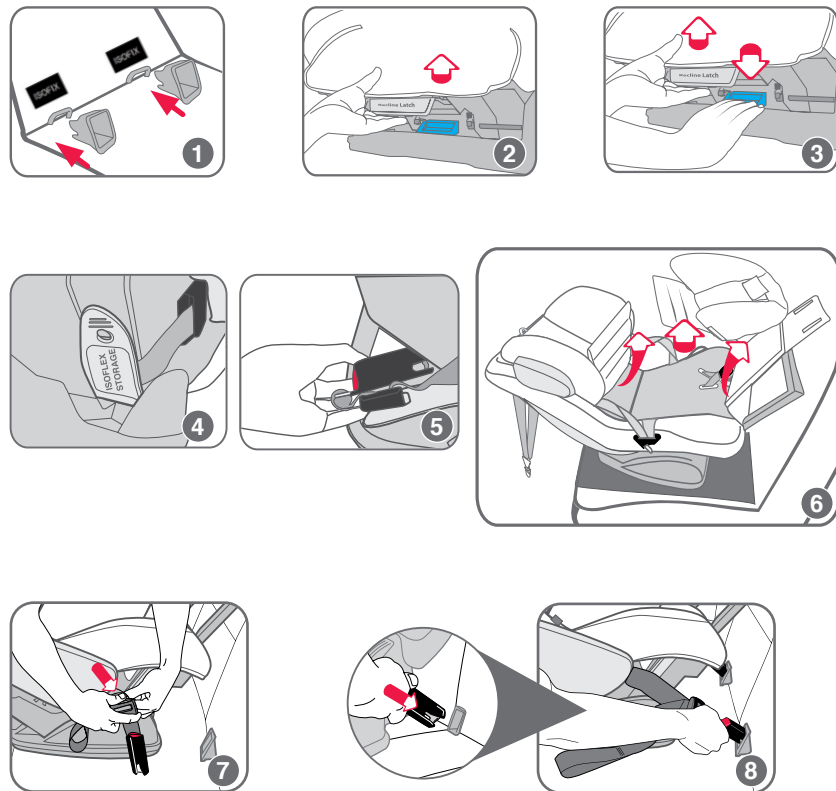
SEE PAGE 56 - 69 FOR FURTHER INFORMATION

SEATBELT QUICK SETUP FORWARD FACING



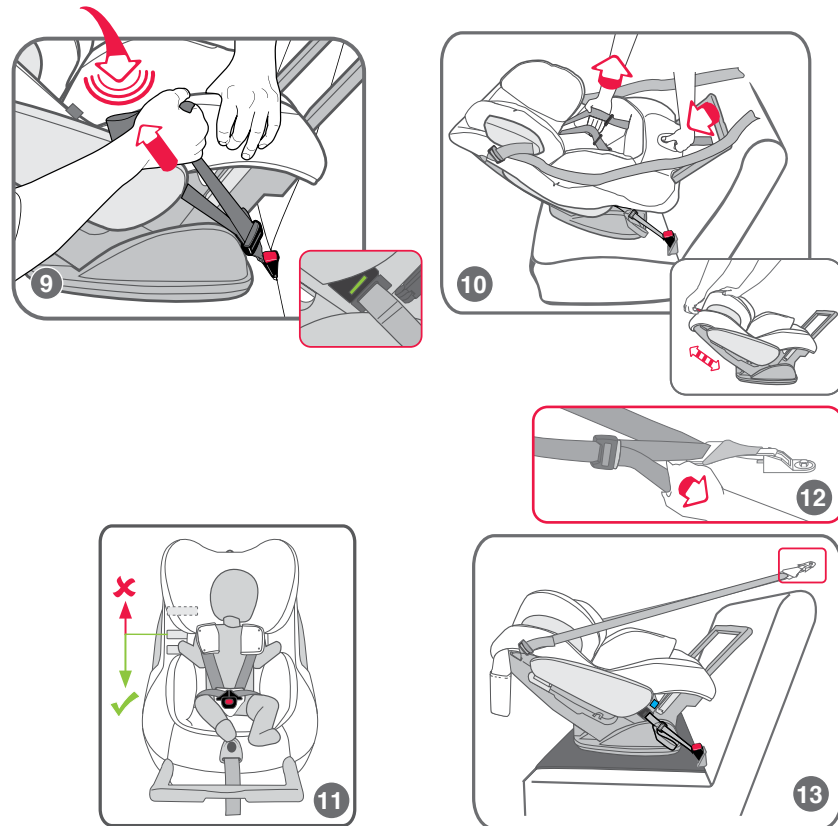
SEE PAGE 56 - 69 FOR FURTHER INFORMATION

ISOFLEX QUICK SETUP REARWARD FACING



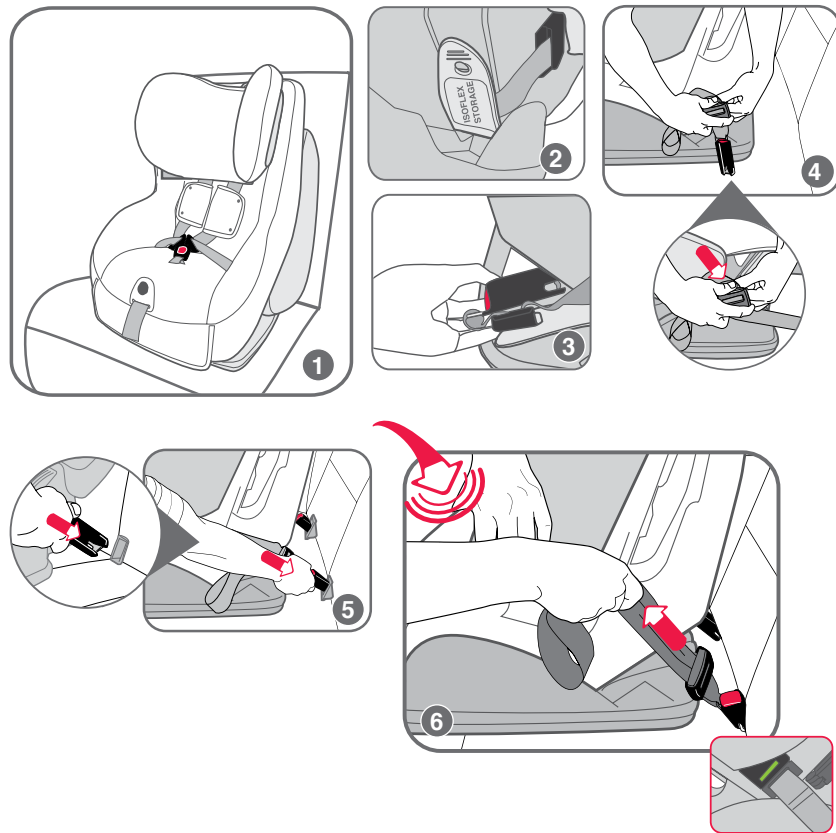
SEE PAGE 36 - 48 FOR FURTHER INFORMATION

ISOFLEX QUICK SETUP REARWARD FACING



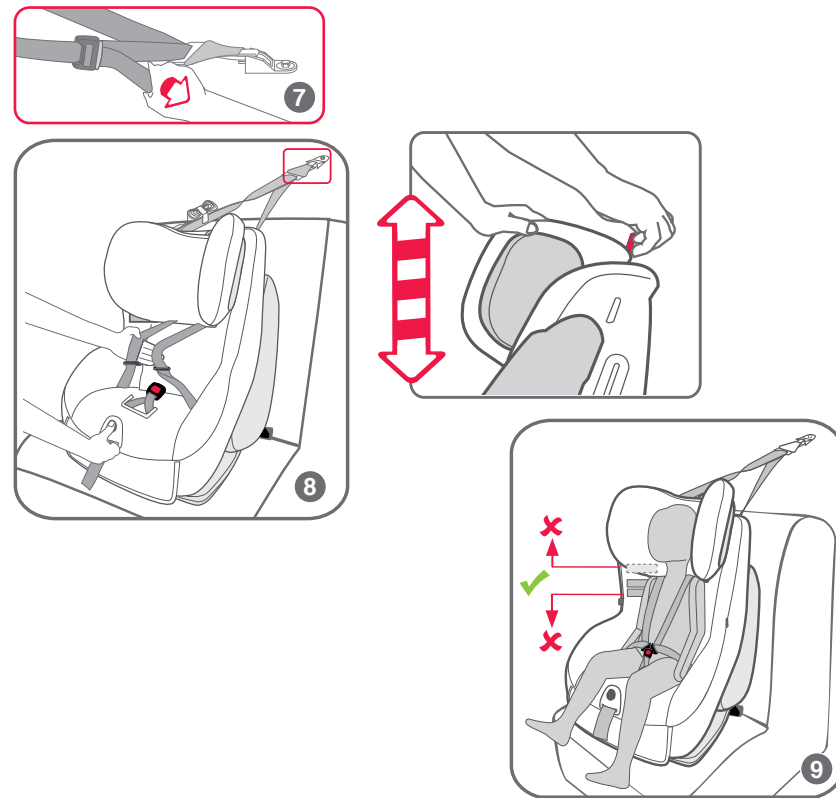
SEE PAGE 36 - 48 FOR FURTHER INFORMATION

ISOFLEX QUICK SETUP FORWARD FACING



SEE PAGE 63 - 69 FOR FURTHER INFORMATION

ISOFLEX QUICK SETUP FORWARD FACING



SEE PAGE 63 - 69 FOR FURTHER INFORMATION

INTRODUCTION

To be used only in a rearward-facing position until the infants's shoulders either reach the lower shoulder height marker (approximately 12 months of age) or reach the middle height marker (approximately 2 to 3 years of age). Then to be used in a forward-facing position until the child's shoulders reach the upper shoulder height marker (approximately 4 years of age).

Continue to use this child restraint until the child reaches this limit.

Do not use forward facing until child's shoulders are above the lower shoulder height marker.

Infants are at risk of serious injury if they face forward too early.

Children are at risk of serious injury if they move to booster seats too early.

Children who have outgrown this restraint are safest in a larger child restraint with an in-built harness or a booster seat until their shoulders reach the upper shoulder height marker of the restraint.

[illegible]

只用于后向式安装，直到婴儿的肩膀达到靠下的肩高标记（大约12个月的宝宝）或者中部的肩高标记（大约2-3岁的儿童）。然后用于前向式安装，直到儿童肩膀达到靠上的肩高标记（大约4岁的儿童）。

在儿童达到该座椅上限以前必须不断使用这一安全座椅。

在儿童肩高未超过靠下的肩高标记之前不得采用前向式坐姿。

婴儿过早乘坐前向式座椅则可能受到严重的伤害。

儿童过早使用垫高椅则可能受到严重的伤害。

个子比该安全座椅大的儿童最安全的做法是乘坐设有内置安全带的更大汽车座椅或垫高椅，直到他们的肩膀达到该座椅靠上的肩高标记。

INTRODUCTION

Magagamit lamang sa isang nakaharap sa likod na posisyon hanggang sa maabot ng balikat ng sanggol ang alinman sa ibabang marka ng taas ng balikat (humigit-kumulang 12 na buwang edad) o maabot ang panggitnang marka ng taas (humigit-kumulang 2-3 taong edad). Pagkatapos ay magagamit sa nakaharap sa unahan na posisyon hanggang sa maabot ng mga balikat ng bata ang itaas na marka ng taas sa balikat (humigit-kumulang 4 na taong edad).

Ipagpatuloy ang paggamit ng pampigil ng bata na ito hanggang sa maabot ng bata ang limitasyong ito.

Huwag gamitin sa isang nakaharap sa unahan na posisyon hanggang sa malampasan ng mga balikat ng bata ang ibabang marka ng taas ng balikat

Ang mga sanggol ay nasa seryosong peligro ng pagkapinsala kung sila ay haharap ng masyadong maaga.

Ang mga bata ay nasa seryosong peligro ng pagkapinsala kung sila ay masyadong maagang ililipat sa mga upuang booster.

Ang mga batang napagkalakhan na ang pampigil na ito ay pinakaligtas sa isang mas malaking pampigil sa bata na may kasamang guwarnisyon o isang upuang booster hanggang sa maabot ng kanilang mga balikat ang itaas na marka ng taas ng balikat ng pampigil.

Sólo debe utilizarse orientado hacia atrás hasta que los hombros del niño alcancen el marcador de altura inferior (aproximadamente a los 12 meses de edad) o alcancen el marcador de altura medio (aproximadamente de 2 a 3 años de edad). Posteriormente debe utilizarse orientado hacia adelante hasta que los hombros del niño alcancen el marcador de altura superior (aproximadamente a los 4 años de edad).

Utilice este sistema de seguridad infantil hasta que el niño alcance ese límite.

No utilice la silla orientada hacia adelante hasta que los hombros no sobrepasen el marcador de altura inferior.

El niño corre el riesgo de sufrir lesiones graves si se utiliza la silla orientada hacia adelante antes de tiempo.

El niño corre el riesgo de sufrir lesiones graves si se lo traslada antes de tiempo a un asiento elevador.

El niño que ya no quepa en este sistema de seguridad estará más seguro en un asiento para niños más grande con un arnés incorporado o un asiento elevador hasta que sus hombros alcancen el marcador de altura superior del sistema de seguridad.

INTRODUCTION

Na χρησιμοποιείται μόνο σε θέση στραμμένο προς τα πίσω μέχρι οι ώμοι του βρέφους είτε να φτάνουν στον κάτω δείκτη ύψους ώμου (περίπου 12 μηνών) είτε να φτάνουν στον μεσαίο δείκτη ύψους (περίπου 2 με 3 ετών). Κατόπιν να χρησιμοποιούνται σε θέση που να κοιτάζει προς τα εμπρός μέχρι οι ώμοι του παιδιού να φτάνουν στον επάνω δείκτη ύψους ώμου (περίπου 4 ετών).

Συνεχίστε να χρησιμοποιείτε αυτό το σύστημα συγκράτησης βρεφών μέχρι το παιδί να φτάσει σε αυτό το όριο.

Μην το χρησιμοποιείτε στραμμένο προς τα εμπρός μέχρι οι ώμοι του παιδιού να είναι πάνω από τον χαμηλότερο δείκτη ύψους ώμων.

Τα νήπια κινδυνεύουν με σοβαρό τραυματισμό αν κοιτάζουν προς τα εμπρός πολύ νωρίς.

Τα παιδιά διατρέχουν κίνδυνο σοβαρού τραυματισμού, εάν μετακινηθούν σε βοηθητικά

Da utilizzare solo in posizione rivolta all'indietro fino a quando le spalle del bambino raggiungono il marcatore di altezza inferiore della spalla (circa 12 mesi di età) o il marcatore di altezza centrale (circa 2 o 3 anni). Dopo di che, può essere usato nel senso di marcia fino a quando le spalle del bambino raggiungono il marcatore di altezza della spalla superiore (circa 4 anni di età).

Continuare a utilizzare questo sistema di ritenuta del bambino fino a quando raggiunge questo limite.

Non utilizzare nel senso di marcio fino a quando le spalle del bambino superano il marcatore di altezza inferiore.

I neonati sono a rischio di lesioni gravi se messi in posizione frontale troppo presto.

I bambini sono a rischio di lesioni gravi se si muovono dal seggiolino troppo presto.

I bambini che hanno superato la marcatura sono più sicuri in un sistema di ritenuta per bambini più grande con imbracatura interna o in un seggiolino fino a quando le spalle raggiungono il marcatore di altezza superiore della spalla del sistema di ritenuta.

INTRODUCTION

केवल पीछे की तरफ मुँह किये हुये स्थिति में तब तक प्रयोग करें जबतक या तो शिशु का कन्धा कन्धे के नचिले भाग के चिह्न तक न पहुँच जाए (लगभग 12 महीने की आयु पर) या फिर मध्य भाग के चिह्न तक न पहुँच जाए (लगभग 2 से 3 वर्ष की आयु पर)। इसके बाद शिशु का मुँह सामने की दिशा में हो जबतक शिशु का कन्धा कन्धे के ऊपरी भाग के चिह्न तक न पहुँच जाए (लगभग 4 साल की आयु पर)।

शिशु के इस सीमा तक पहुँचने तक इस शिशु प्रतबिन्ध का प्रयोग जारी रखें।

शिशु के मुँह सामने की दिशा की ओर तब तक न करें जबतक कि शिशु का कन्धा कन्धे के नचिले भाग के चिह्न को पार न करें।

शिशुओं को समय से पहले सामने की ओर बैठाने पर उन्हें गम्भीर चोट का खतरा होता है।

बूस्टर सीट को समय से पहले प्रयोग किए जाने पर शिशुओं को गम्भीर चोट का खतरा होता है।

‘जो शिशु इस प्रतबिन्ध के लिए अनुकूल आयु से बड़े हो चुके हों, वे एक बड़े आकार के प्रतबिन्ध में सबसे अधिक सुरक्षित होते हैं

जिसकी इन-बिल्ट हार्नेस या बूस्टर सीट हो और तब तक जब तक उनके कन्धे प्रतबिन्ध के कन्धे के ऊपरी भाग के चिह्न तक न पहुँच जाए।

僅可後向安裝使用，直至嬰兒肩膀達到靠下的肩高標記（大約12個月大），或是達到中間肩高標記（大約2至3歲大）。然後您才能讓其乘坐前向安裝使用的座椅，直至其肩膀達到高位肩膀高度標記（大約4歲大）。

孩子應一直採用後向式坐姿，直至其達到後向式坐姿的上限。

孩子肩膀未超過靠下的肩高標記前，切勿採用前向式坐姿。

孩子若過早乘坐前向式汽車座椅，可能會對其造成嚴重的傷害。

急於讓孩子過早地乘坐墊高椅，可能會對其造成嚴重的傷害。

孩子因長大超出此汽車座椅的上限，最安全的做法便是採用更大且有內建式安全帶的汽車座椅，或是乘坐墊高椅，直至其肩膀達到汽車座椅靠上的肩高標記。

Chỉ được sử dụng ở vị trí hướng mặt về phía sau cho đến khi vai của bé cao tới vạch ghi ở dưới cùng (khoảng 12 tháng tuổi) hay tới vạch ghi độ cao ở giữa (khoảng 2 tuổi tới 3 tuổi). Sau đó được sử dụng hướng mặt về phía trước đến khi vai của em cao tới vạch ghi ở trên cùng (khoảng 4 tuổi).

Hãy tiếp tục sử dụng ghế em bé này đến khi em cao tới giới hạn này.

Không sử dụng hướng mặt về phía trước cho đến khi vai của em bé trên vạch ghi độ cao của vai ở dưới cùng.

Bé sơ sinh có nguy cơ bị chấn thương nghiêm trọng nếu hướng mặt về phía trước quá sớm.

Trẻ em có nguy cơ bị chấn thương nghiêm trọng đối sang ghế em bé (booster) quá sớm.

Các em nào lớn hơn ghế em bé được an toàn nhất là trong ghế em bé (restraint) lớn hơn với đai nịt gắn sẵn hoặc ghế trẻ em rộng hơn cho đến khi vai của em cao tới vạch ghi độ cao của vai ở trên cùng của ghế em bé.

INTRODUCTION

No child restraint can guarantee absolute protection from injury in every crash. However, to ensure that your child gets all the protection designed into the restraint PLEASE READ AND FOLLOW THESE INSTRUCTIONS EXACTLY and use only Britax Safe-n-Sound recommended parts and accessories.

The child should not sit in this restraint in the forward facing mode until their neck muscles are able to support their head. However Britax recommends that you keep your child in a rearward facing restraint for as long as possible (or until the appropriate shoulder height marker is reached between 12 months and 2yrs approx).

Carefully read all the instructions for installation in this book. If in doubt about the method of installation, consult Britax childcare or agent or a child restraint fitter or, in New Zealand, to consult the agent for the vehicle.

To be used with a lap-sash or lap only seatbelt or ISOFIX low anchorages (if fitted) in the back of most cars with forward facing seats.

If you purchased a model with the added protection of a Side Impact Cushion Technology™ (if fitted) you can see the Side Impact Cushion fitted on the sides of the seat. There is no installation or assembly required to activate the Side Impact Cushion, it functions in a side crash to provide additional protection to the occupant.

If you purchased a model which is ISOFIX Compatible there will be straps fitted to each side of the lower part of the seat. Refer to page 24.

Regional Road Rules may prohibit the use of this restraint in the front seat until the child is 4 years of age. Check your Regional Rules for exemptions.

Always store the instruction book in the pocket provided on the side of the cover.

INDEX

PAGE

16	WARNINGS	52	SPECIAL FEATURES: FORWARD-FACING
18	SHOULDER HEIGHT MARKERS A GROWING CHILD	55	SUITABLE FOR USE
20	SHOULDER HEIGHT MARKERS	56	HOW TO INSTALL PREPARATION
21	SHOULDER HEIGHT MARKERS THE NEXT STEP	59	HOW TO INSTALL USING SEATBELT
22	SPECIAL FEATURES: REARWARD-FACING	60	HOW TO INSTALL TOP TETHER
25	SUITABLE FOR USE	63	HOW TO INSTALL USING ISOFLEX CONNECTORS
27	INSTALLATION METHOD	65	HOW TO INSTALL USING ISOFLEX
28	HOW TO INSTALL PREPARATION	66	HOW TO USE
29	HOW TO INSTALL USING SEATBELT	72	HOW TO INSTALL IN AN AIRCRAFT
34	HOW TO INSTALL TOP TETHER	74	CARE & MAINTENANCE
36	HOW TO INSTALL USING ISOFLEX CONNECTORS	80	ACCESSORIES
37	HOW TO INSTALL USING ISOFLEX	83	INSTALLATION OF CAR ANCHOR FITTING
42	HOW TO USE	87	TRAVELLING TIPS
49	HOW TO REMOVE	88	IN CASE OF ACCIDENT

WARNINGS

- Fit the restraint firmly to the car seat.
- Fit the harness firmly to the child.
- A loose restraint or harness is dangerous.
- Supervision of children is needed because they may be able to undo the buckles and adjusters.
- Use the restraint exactly as shown in the instructions.
- **DO NOT LEAVE CHILDREN UNATTENDED IN THE CAR.**
- Do not alter or modify this restraint.
- Repairs must only be done by the manufacturer or agent.
- Do not allow the restraint to come into contact with polishes, oils, bleach and other chemicals.
- Destroy the restraint if it has been in a severe crash, even if no damage is visible. See page 89.
- **DO NOT USE THIS RESTRAINT WITHOUT THE COVER.**
- Always secure the loose end of the top tether strap. Do not use the child restraint where this strap may fall into a split in the seat back or off the side of the seat.
- **ALWAYS ATTACH HOOK AND REMOVE SLACK.**
- To ensure infant's back is evenly supported, do not put more than one nappy on the baby and make sure the nappy is not thickly folded at the back.
- **DO NOT USE A REAR-FACING CHILD RESTRAINT WHERE AN AIRBAG IS FITTED IN FRONT OF THE SEATING POSITION.**
- Do not harness an infant wrapped in a blanket or swaddled. Any blanket or wrap must only be placed over the harness and infant.



IMPORTANT :

IF THE BASE IS ONLY FOR INSTALLATION WITH SEATBELT:

- **TO BE USED WITH LAP-SASH OR LAP ONLY SEATBELTS IN THE BACK OF MOST CARS WITH FORWARD FACING SEATS.**
- Without ISOFIX compatible connectors; this child restraint is not approved for use with any connectors that connect to the car's ISOFIX low anchorages.

IF THE BASE IS FITTED WITH ISOFLEX CONNECTORS:

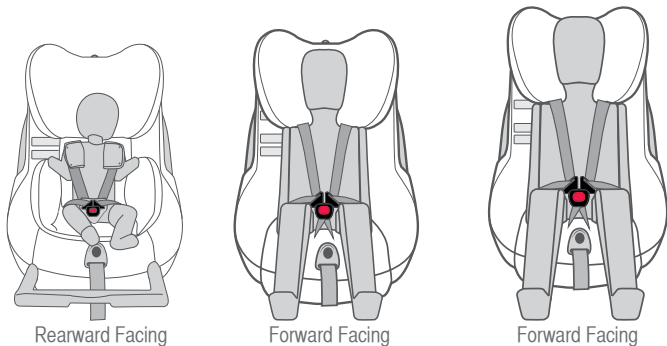
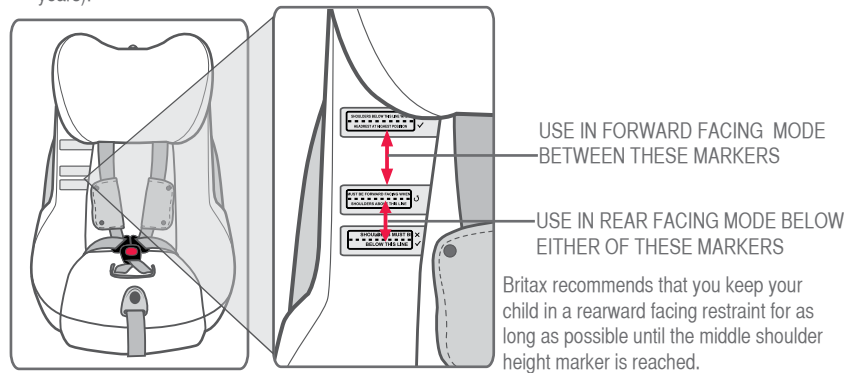
- **TO BE USED WITH A LAP-SASH OR LAP-ONLY SEATBELT OR ISOFIX LOW ANCHORAGES IN THE BACK OF MOST CARS WITH FORWARD FACING SEATS.**
- **Do not attach the lower attachment connectors of two separate child restraints to the same ISOFIX low anchorages in your car.**
- **Always attach the top tether strap to the child restraint and upper anchorage in your car before each journey.**
- Child restraint lower attachment connectors and the ISOFIX low anchorages in your car are designed to withstand only those loads imposed by a correctly fitted child restraint.
- Regularly check the restraint components, straps and other fittings for correct function and condition. If faulty, cease using and seek repair by Britax.
- **IF AN AIRBAG IS FITTED IN THE SEATING POSITION WHERE THE CHILD RESTRAINT IS TO BE FITTED, FOLLOW THE VEHICLE MANUFACTURERS WARNINGS AND INSTRUCTIONS.**
- Protect all webbing from abrasion and cutting by sharp corners and edges.
- The restraint should not be purchased or sold as a second hand item. It is recommended not to use child restraints older than 10 years as the protection in an accident may be reduced.
- **THIS RESTRAINT IS NOT SUITABLE FOR USE WHERE THE TOP TETHER STRAP MAY FALL INTO A SPLIT IN THE SEAT BACK OR OFF THE SIDE OF THE SEAT.**
- Seatbelt extenders are not recommended to be used if the seatbelt is not long enough to secure the child restraint. If seatbelts are too short then seek advice from a child restraint fitter and consider their recommendations before using a seatbelt extender. If you use a seatbelt extender then ensure that the seatbelt buckle does not enter the rearward or forward facing belt paths.
- **THIS RESTRAINT MUST BE ATTACHED TO A CHILD RESTRAINT UPPER ANCHORAGE POINT IN THE CAR. REFER TO CAR OWNER'S HANDBOOK FOR LOCATION OF UPPER ANCHORAGE POINTS. REFER TO A CHILD RESTRAINT FITTING STATION IF NO UPPER ANCHORAGE POINTS ARE IN THE MOTOR CAR. Refer to pages 83 to 86.**

SHOULDER HEIGHT MARKERS A GROWING CHILD

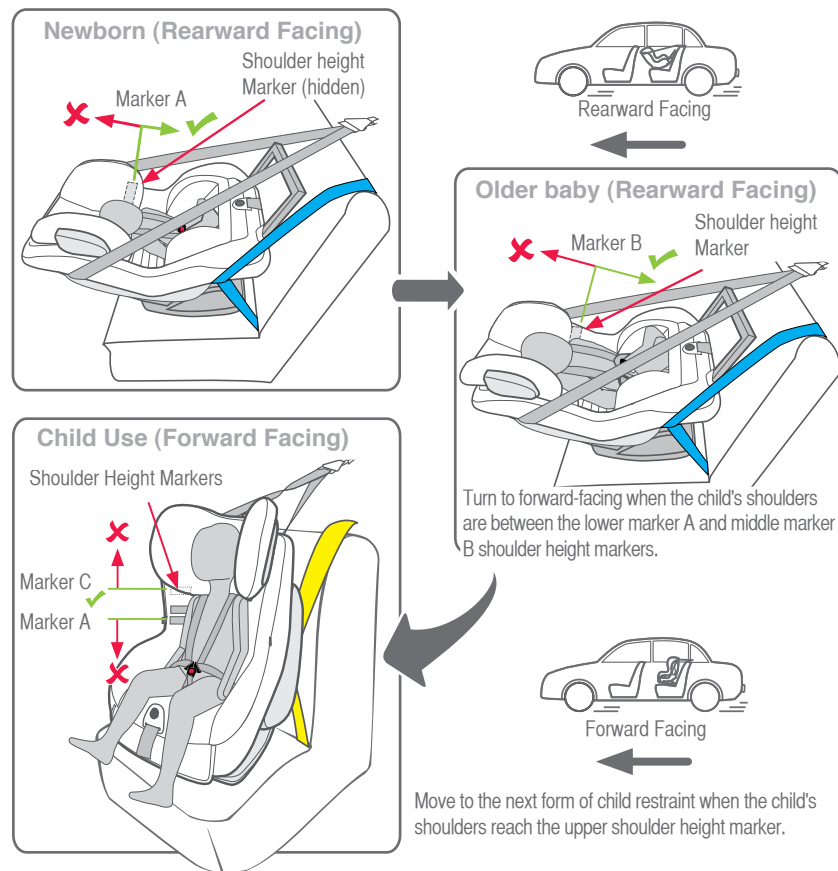
This restraint must remain rear facing until the child reaches the lower shoulder height marker (approx. 12 months old).

Once the child reaches the lower shoulder height marker the restraint can either;

- Remain rear facing until the middle shoulder height marker is reached, or
- Change the mode to forward facing until the upper shoulder height marker is reached (approx 2 to 3 years).



SHOULDER HEIGHT MARKERS A GROWING CHILD



SHOULDER HEIGHT MARKERS

IMPORTANT: Follow this advice.

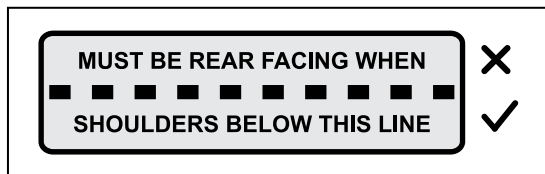
The child restraint is unsuitable for the occupant when the shoulders are above the upper height marker label. The child needs to be moved into the next form of child restraint.

Marker A: LOWER SHOULDER HEIGHT MARKER

When the child's shoulders reach the lower marker, the child restraint may be turned to face towards the front of the vehicle or move the child to another forward facing seat with in built harness.

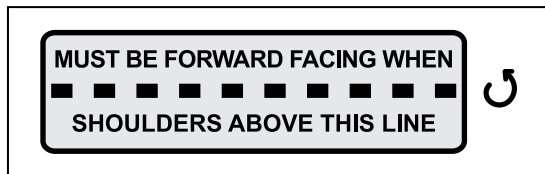
At least 12 months of age.

Britax recommends to maintain rearward facing for as long as possible until the shoulders reach marker B.



Marker B: MIDDLE SHOULDER HEIGHT MARKER

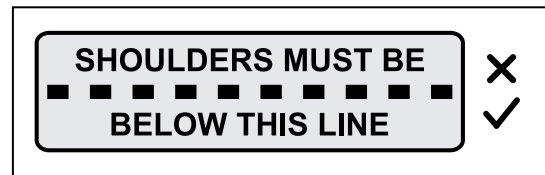
When the child's shoulders reach this marker, the seat must be moved into forward facing mode. Approximately 2 to 3 years of age.



Marker C: UPPER SHOULDER HEIGHT MARKER

When the child's shoulders reach this upper marker, the child is now too big for the child restraint. It is now time to move to the next child restraint.

Approximately 4 years of age.

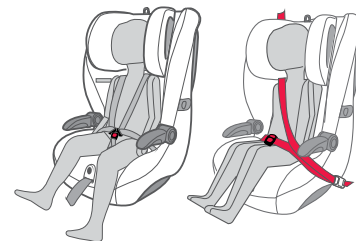


SHOULDER HEIGHT MARKERS THE NEXT STEP

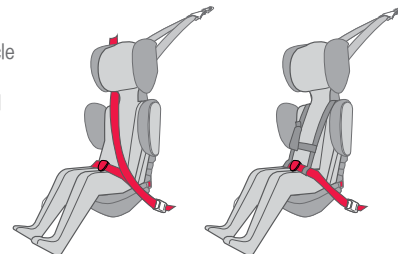
Next type of restraint that can be used in the car for your child.

When your child has outgrown this seat, you can use:

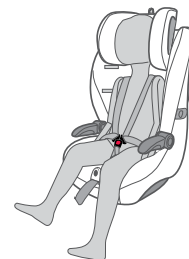
- A convertible booster seat with integrated harness until approximately 4 years old and then as a booster seat with vehicle lap-sash seatbelt or seatbelt and compatible child harness until approx 6 to 8 years of age.



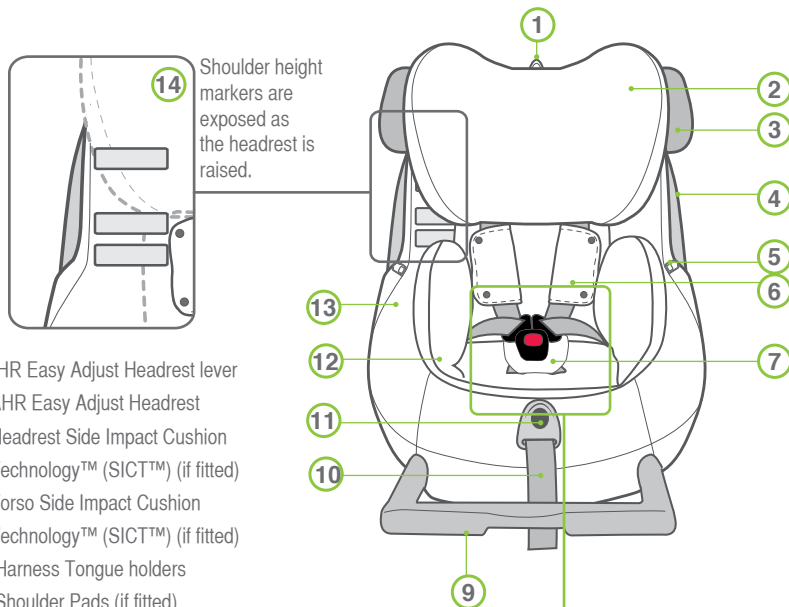
- Or you can use a dedicated booster seat with vehicle lap-sash seatbelt or seatbelt and compatible child harness until 6 to 8 years of age (eg: Safe-n-Sound Hi-Liner) or until 8 to 10 years of age (eg. Safe-n-Sound Encore 10).



- Or a harnessed child restraint suitable for children approximately 6 months to 8 years old.

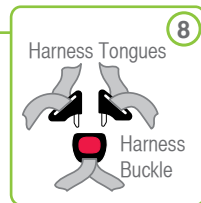


SPECIAL FEATURES: REARWARD-FACING

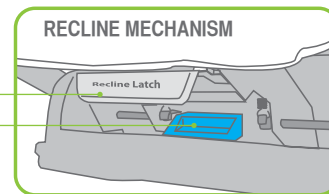
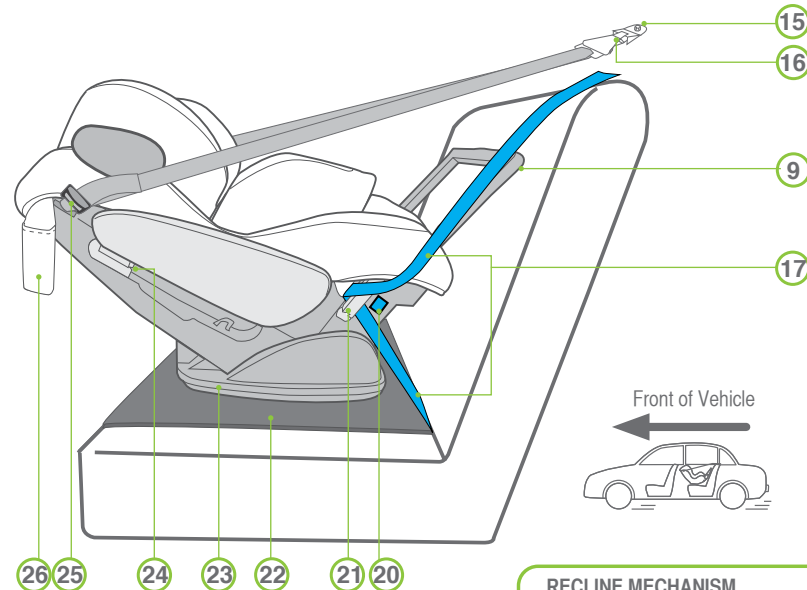


1. AHR Easy Adjust Headrest lever
2. AHR Easy Adjust Headrest
3. Headrest Side Impact Cushion Technology™ (SICT™) (if fitted)
4. Torso Side Impact Cushion Technology™ (SICT™) (if fitted)
5. Harness Tongue holders
6. Shoulder Pads (if fitted)
7. EZ Buckle System (if fitted)
8. Harness Tongues and Buckle (Red button)
9. Stabilising Bar for rearward facing use
10. Harness Adjustment Strap
11. Harness Adjustment Button
12. Infant Safety Cushion™ Padded Insert
13. Padded cover for comfort (may vary in style)
14. Shoulder Height Markers (may be hidden behind headrest)

NOTE: Not all models have all features shown.

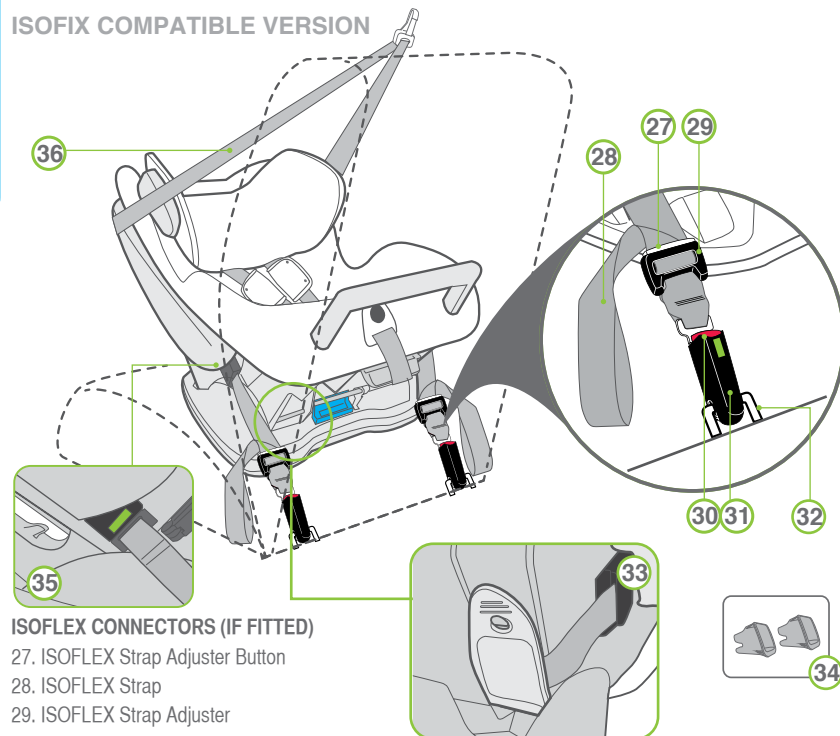


SPECIAL FEATURES: REARWARD-FACING



SPECIAL FEATURES: REARWARD-FACING

ISOFIX COMPATIBLE VERSION



ISOFLEX CONNECTORS (IF FITTED)

- 27. ISOFLEX Strap Adjuster Button
- 28. ISOFLEX Strap
- 29. ISOFLEX Strap Adjuster
- 30. ISOFLEX Connector Release Button
- 31. ISOFLEX Connector
- 32. Vehicles ISOFIX low anchorage
- 33. ISOFLEX storage cover
- 34. Insertion Guides
- 35. Tension Indicator (Green when activated)
- 36. Top tether

ISOFLEX Connector is located under storage cover

SUITABLE FOR USE

To be used only in a rearward-facing position until the infant's shoulders either reach the lower shoulder height marker (approximately 12 months of age) or reach the middle height marker (approximately 2 to 3 years of age). Then to be used in a forward-facing position until the child's shoulders reach the upper shoulder height marker (approximately 4 years of age).

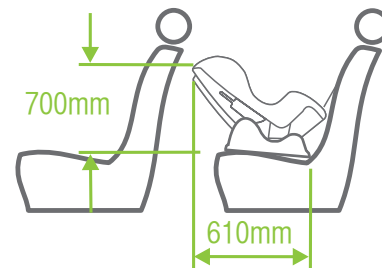
Continue to use this child restraint until the child reaches this limit.

Do not use forward facing until child's shoulders are above the lower shoulder height marker.

Infants are at risk of serious injury if they face forward too early.

Children are at risk of serious injury if they move to booster seats too early.

Children who have outgrown this restraint are safest in a larger child restraint with an in-built harness or a booster seat until their shoulders reach the upper shoulder height marker of the restraint.



To ensure that the space is sufficient, the purchaser should check the measurements between the vehicle's rear and front seats in which the child restraint is intended to be used.

Ensure babies and toddlers are adequately shaded from direct sunlight through side or rear windows.

Check the car is ventilated by opening windows or using the car's ventilation system taking in external air. Recirculation setting is not suitable for providing ventilation.

Regional Road Rules may prohibit the use of this restraint in the front seat until the child is 4 years of age. Check your Regional Road Rules for exemptions.

SUITABLE FOR USE

WARNINGS

DO NOT USE RESTRAINT IN REARWARD FACING MODE WITHOUT STABILISING BAR FULLY EXTENDED.

Do not use the restraint without the top tether strap correctly attached.

DO NOT USE A REAR FACING CHILD RESTRAINT WHERE AN AIRBAG IS FITTED IN FRONT OF THE SEATING POSITION.

Do not use on any vehicle seat which faces sideways or rearwards.

Never leave babies or toddlers in a stationary car in the sun because of the risk of heat exhaustion. Ensure babies and toddlers have adequate ventilation and are shaded from direct sunlight through side or rear windows.



Do not allow the front seat to alter the installed angle of the restraint. It is permissible to allow the restraint to touch the front vehicle seat.

CHILD RESTRAINT UPPER ANCHORAGE FITTING

To use this child restraint, the car will need a child restraint upper anchorage fitting in the seating position that you intend to use. Refer to the car owner's handbook.

If no upper anchorage fitting is provided then you will need to install an upper anchorage fitting. Refer to pages 83 to 86.

The upper anchorage fitting is required for attaching the top tether in both rear facing mode and forward facing mode covered later in these instructions.

INSTALLATION METHOD

Remove all packaging from the child restraint. If the child restraint is ISOFIX Compatible, remove the ISOFLEX insertion guides (page 24, Ref 34) from the supplied location and store safely for further use.

Consult the car owner's handbook for location of top tether anchorage points.

If there is no child restraint anchor fitting or child restraint anchor point refer to pages 83 to 86 for the installation of the anchor fitting as well as the use of extension straps.

An anchor fitting is required to attach the top tether strap to fully install the restraint to the vehicle. The top tether strap must be used with this child restraint when used.

Select a seating position with a child restraint anchor fitting directly behind the seating position.

Determine if the vehicle ISOFIX Low Anchorages or Seatbelt will be used to secure the restraint installation. The ISOFLEX connectors will need to be deployed from their storage location prior to adjusting the seat recline angle to rearward facing mode.

SEATBELT OR ISOFIX COMPATIBLE

Meridian SICT™ - This seat is suitable for fitting with seatbelt and top tether strap.

Platinum SICT™ - This seat may offer 2 methods of installation (if fitted) - installation with seatbelt and top tether strap or ISOFLEX Connectors and top tether strap.

SEAT BELT WITH TOP TETHER STRAP

Use your vehicle seat belt and top tether strap to install this seat. Follow the directions outlined:

For Rearward Facing Use - Refer to page 29 to 35

For Forward Facing Use - Refer to page 59 to 62

ISOFLEX (if fitted) WITH TOP TETHER STRAP

Use your vehicles ISOFIX low anchorage points and top tether strap to install this seat. Follow the directions outlined:

For Rearward Facing Use - Refer to page 36 to 41

For Forward Facing Use - Refer to page 63 to 65

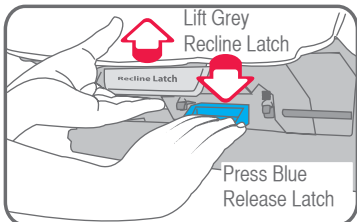
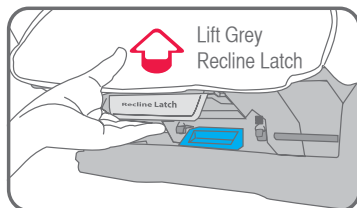
HOW TO INSTALL- PREPARATION

INSTALLING INTO VEHICLE REARWARD FACING

- A. The restraint is normally packaged in the fully upright forward facing mode. If you need to use it rearward facing you must first fully recline the restraint. Convert the restraint to rearward facing mode by referring to steps below.
- B. Ensure ISOFIX connectors are removed from the storage location before reclining or changing mode if ISOFIX low anchorages are to be used.

FULLY RECLINE RESTRAINT:

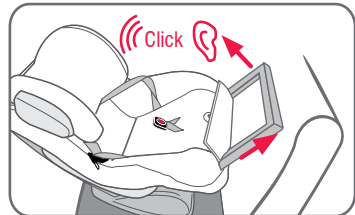
Place one hand on the front corner of the base firmly while with the other hand lifts the grey recline latch up to unlock, continue pulling restraint forward until fully reclined. The blue release latch prevents over reclining when installed forward facing.



CONVERT TO REARWARD FACING MODE:

Once fully reclined, press the blue release latch located under the restraint body while with the other hand lifts the grey recline latch up to unlock, continue pulling the restraint forward until fully reclined into rearward facing mode.

Deploy the stabilising bar by accessing under the front flap of the cover. Extend the bar by pulling out gently. Once fully extended, push bar toward headrest to latch in position.

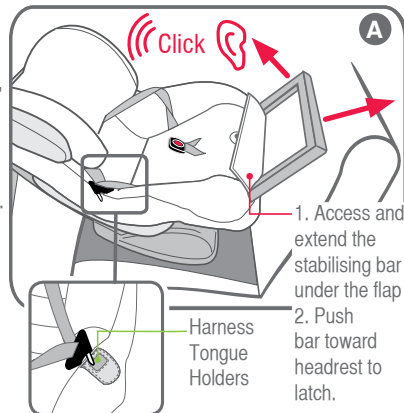


HOW TO INSTALL USING SEATBELT

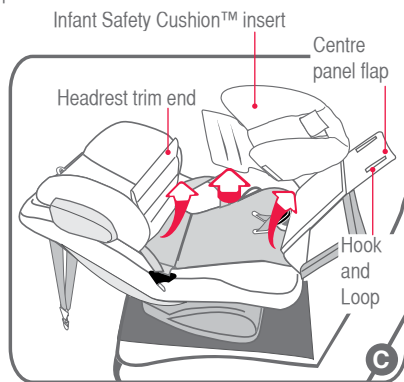
INSTALLING INTO THE CAR USING SEATBELT AND TOP TETHER

Prepare the seat recline mode as detailed on page 28 'INSTALLING INTO VEHICLE REARWARD FACING'.

- A. Undo the buckle and place buckle tongues in the Harness Tongue Holders on each side of the cover. Lift the flap at the end of the seat sufficiently to access the stabilising bar, pull out stabilising bar fully and then gently push toward headrest until you hear a click. The stabilising bar is now latched in place.
- B. Place restraint rearward facing in the chosen seating position with the Messy Mat™ (if fitted) positioned centrally in the chosen seating position. Ensure the child seat is against the vehicle seat back. The stabilising bar need not be in contact with the vehicle seat, but must be extended and locked.

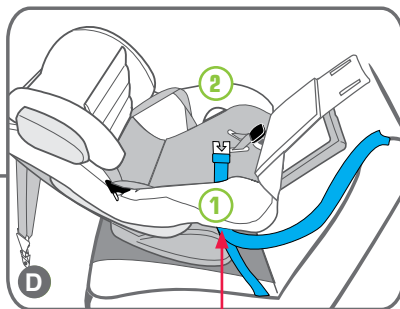
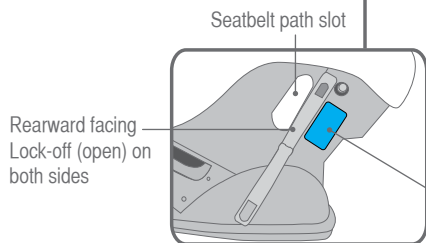


- C. Remove the Infant Safety Cushion™ insert, Lift headrest trim end, and centre panel flap to expose the comfort pad from the seat shell. Lift the comfort pad from the seat shell.



HOW TO INSTALL USING SEATBELT

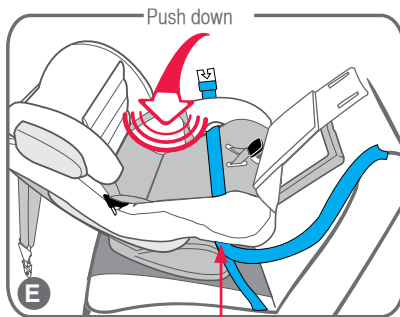
- D. If using a lap-sash seatbelt, open the rearward facing lock-off. Fully lengthen the seatbelt and feed the seatbelt through the seatbelt path slot and across the seat surface below the crotch buckle and straps under the comfort pad and through the opposite slot. Follow the blue **REARWARD FACING BELT PATH** label.



Pass buckle tongue through slots 1 and 2.

Blue - **REARWARD FACING BELT PATH** label.

- E. Engage seatbelt buckle and tongue. Firmly push down on the seat, whilst pulling the sash belt to remove all slack and tighten the seatbelt. While holding the tension, close the lock-off on the buckle side (both straps) which will then hold the tension. Close the lock-off on the retractor side (but only clamp the lap portion of the seatbelt not both). See illustrations on page 31. Do not use the lock-off if the buckle interferes with closing the lock-off. Allow excess belt to feed back into the retractor. Ensure there is no slack in the seatbelt once both lock-offs are engaged.



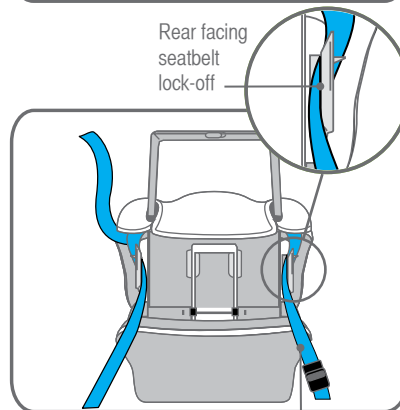
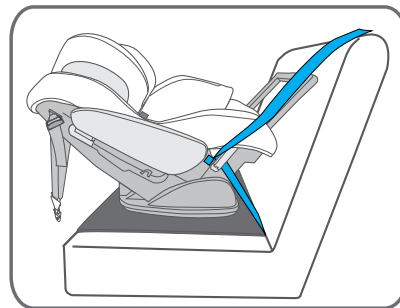
Pass buckle tongue through here

NOTE: Seatbelt buckle and tongue must not rest between restraint cover and restraint. If seatbelt buckle is adjustable, adjust buckle as low as possible away from the restraint.

HOW TO INSTALL USING SEATBELT

- F. Refit the comfort foam over the tensioned seatbelt installation. Refit the centre panel flap and position the harness tongues in their holders so they are accessible later. Ensure the hook and loop connection is made to the side trim. Reposition the headrest trim end. For smaller babies replace the Infant Safety Cushion™ padded insert.

Do not use the padded insert if the child's shoulders reach the lower shoulder height marker. Remove the insert for longer use whilst still rear facing. Refit the Infant Safety Cushion™ padded insert by feeding the buckle (and Ez buckle (if fitted) through the aperture in the padded insert. Use the hook and loop on the padded insert to attach the sides and back, ensure the shoulders straps are accessible.



LAP ONLY SEATBELT

If placing the restraint in a seating position with a lap only seatbelt follow all instructions as above, ensuring the child seat is against the vehicle seat back and lock-off both straps in the lock-offs on both sides.

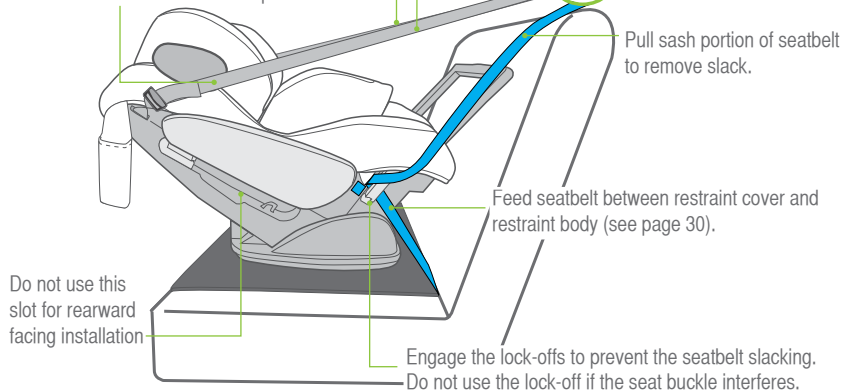
On the car seatbelt buckle side, pass both lap and sash seatbelt through the lock-off and lock in place

HOW TO INSTALL USING SEATBELT

Allow the top tether strap to position over the SICT™ cushion of the trim as necessary. The top tether strap should have slack removed and be in-line with the anchorage or top of the seat back.

Ensure the top tether strap is tightened, attached to the upper anchorage point and that the straps are the same length on both sides of attachment clip. See fitting the top tether, on page 34.

Top tether strap may be positioned around the SICT™ cushion if required



⚠ WARNINGS

DO NOT USE RESTRAINT IN REARWARD FACING MODE WITHOUT STABILISING BAR FULLY EXTENDED. THE TOP TETHER STRAP MUST ALWAYS BE FITTED WHEN THE CHILD RESTRAINT IS USED IN A VEHICLE. ALWAYS ATTACH THE HOOK AND REMOVE THE SLACK.

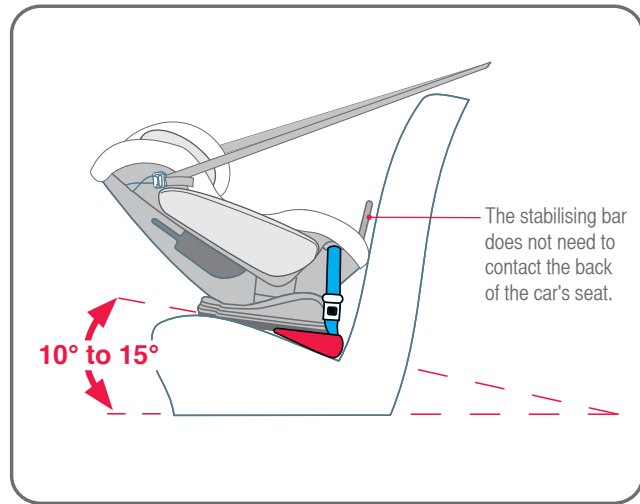
Platinum SICT™ version shown.

HOW TO INSTALL USING SEATBELT

ANGULAR ADJUSTMENT OF RESTRAINT

Some vehicle seats have more rearward slope than others. If the angle of the seat causes the baby to be too upright for comfort, the angle may be altered by placing a firm packing between the seat and the underside of the base. Packing can be a firmly rolled up towel.

Do not remove all of the rearward slope by over packing. Always leave a rearward slope angle of approximately 10 to 15 degrees as shown



HOW TO INSTALL TOP TETHER

The following will usually be done once the baby has been harnessed into the seat.

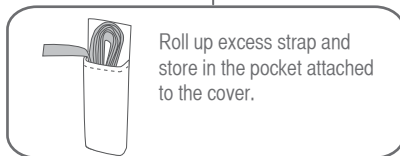
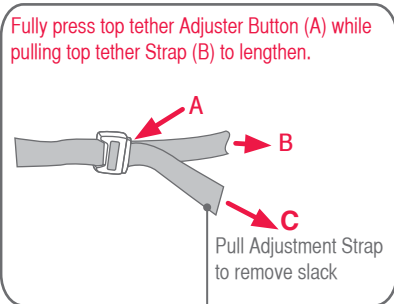
- A. Lengthen the top tether strap by pressing the adjuster button (A) while pulling the strap at (B).

Locate the child restraint upper anchorage fitting in the vehicle that is directly behind the rear seat location chosen. Refer to the car owner's manual for the location (If there is no upper anchorage fitting then refer to pages 83 to 86 for instructions in adding an anchor fitting).

Connect the top tether attachment clip to the car's upper anchorage point. Make sure to remove as many twists as possible from the top tether straps.

The strap positions around the outside of the Side Impact Cushion.

- B. Remove the slack from the adjustable top tether strap by pulling adjustment strap (C), do not over-tighten causing the restraint to lift off the seat or the headrest to become narrow. Roll up excess strap and place in the pocket provided.

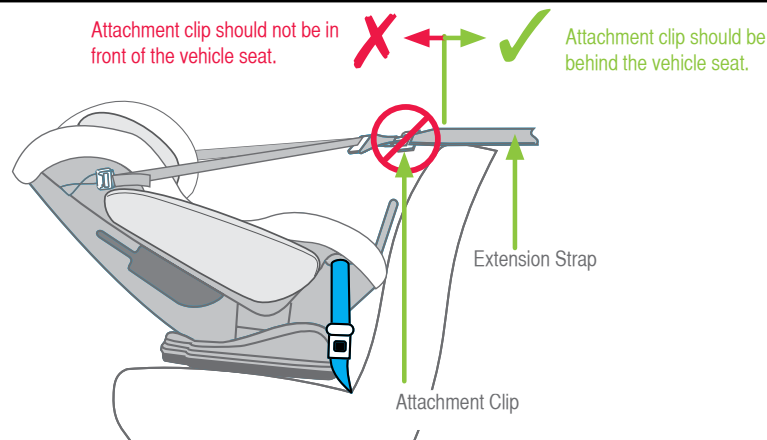


CAUTION:
CHILDREN CAN BE INJURED OR RESTRAINTS AND TOP TETHER STRAP DAMAGED BY UNSECURED CARGO IN A COLLISION. SECURE OR REMOVE HAZARDOUS CARGO BEFORE USING THIS CHILD RESTRAINT.

HOW TO INSTALL TOP TETHER

If the car's child restraint anchor fitting is behind the vehicle seat back you may need to use an extension strap as part of the top tether installation.

IMPORTANT: If using an Extension Strap, positioning the attachment clip above the child may lead to injury in an accident therefore make sure that the attachment clip is not positioned in front of the vehicle seat. Use a shorter extension strap or no extension strap.



It is normal to have some sideways movement if the headrest end is pushed sideways. Ensure that the seatbelt is tight and the slack is removed from the tether strap. If the tether strap is over tightened then the angle of the seat may be affected.

IMPORTANT :
Always secure the loose end of the top tether strap to prevent it hanging out of the car or being accessible by the child.
THIS RESTRAINT IS NOT SUITABLE FOR USE WHERE THE TOP TETHER STRAP MAY FALL INTO A SPLIT IN THE SEAT BACK OR OFF THE SIDE OF THE SEAT.
ALWAYS ATTACH TOP TETHER HOOK AND REMOVE SLACK IN THE TOP TETHER STRAP.

HOW TO INSTALL USING ISOFLEX CONNECTORS

WHAT ARE ISOFIX LOW ANCHORAGES IN A VEHICLE?

ISOFIX low anchorages are fixed, standardised anchoring points for securely installing an ISOFIX compatible child restraint in a vehicle with ISOFIX low anchorages. They are an alternative method of installing the child restraint without using car's seatbelt. It has now become an international standard for vehicles. This anchoring technology minimises installation mistakes by optimising the protective effect of the connection between vehicle and ISOFIX compatible child restraint.

INSTALLING THE RESTRAINT INTO THE CAR (USING ISOFLEX CONNECTORS IF FITTED TO THE CHILD RESTRAINT)

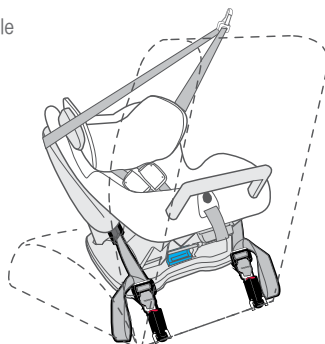
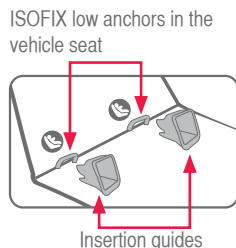
To prevent damage to vehicle seat it may be necessary to remove or open a trim covering the ISOFIX low anchorages.

- A. Locate the ISOFIX Low Anchorages in the vehicle seat bight. The location may be identified by one of the following symbols, or the anchorage bars may be visible.



If you cannot locate them, check your vehicle owners manual.

- B. If necessary, clip the two insertion guides to the two ISOFIX fastening points of the vehicle seat (between seat and backrest). The guides are provided to allow easier alignment of the child restraint. The guides are not required where anchors are visible or there are already guides provided in the vehicle seat.

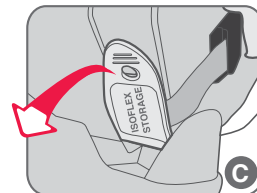


HOW TO INSTALL USING ISOFLEX

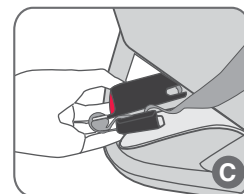
INSTALLING INTO THE CAR

USING ISOFLEX AND TOP TETHER CONNECTORS IF FITTED

- C. With the restraint upright, remove both ISOFLEX connectors from storage on the rear of the restraint by lifting the cover flap the clip as shown. Close the flap covers.

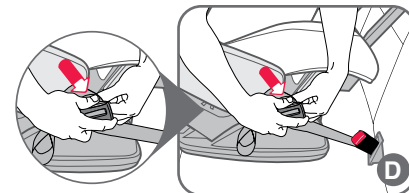


- D. Recline instructions are shown on page 28.



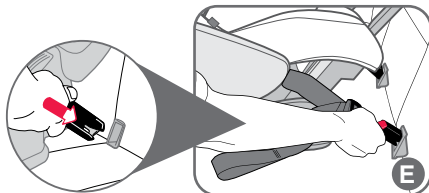
- E. Press and hold the ISOFLEX adjuster release button and pull the connector strap to fully lengthen. Repeat for both connector straps.

- F. Place the restraint in the desired location on the vehicle seat between the two ISOFIX low anchorages with the child seat against the vehicle seat back as shown.



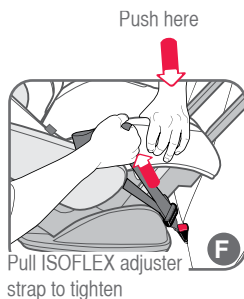
HOW TO INSTALL USING ISOFLEX

- G. The stabilising bar need not be in contact with the vehicle seat back but must be extended and latched. Engage the ISOFLEX connectors into each ISOFIX low anchorage. A click may be felt and a green indicator will show on the top of the ISOFLEX connector when it has engaged. Pull each strap to ensure both lower anchorage connectors are engaged.

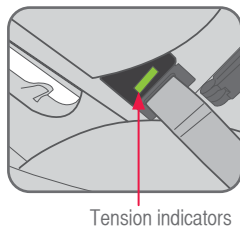


NOTE: Pull against the ISOFLEX connector to verify that it is secure.

- H. Push downwards and rearward on the restraint to compress it into the vehicle seat. Whilst compressed into the seat, pull on adjuster strap to remove all slack and tighten. Repeat for the adjuster strap on the other side of the restraint. The two tension indicators will show green indicating adequate tension has been applied.



- I. Connect the top tether as described on page 34 and 35.



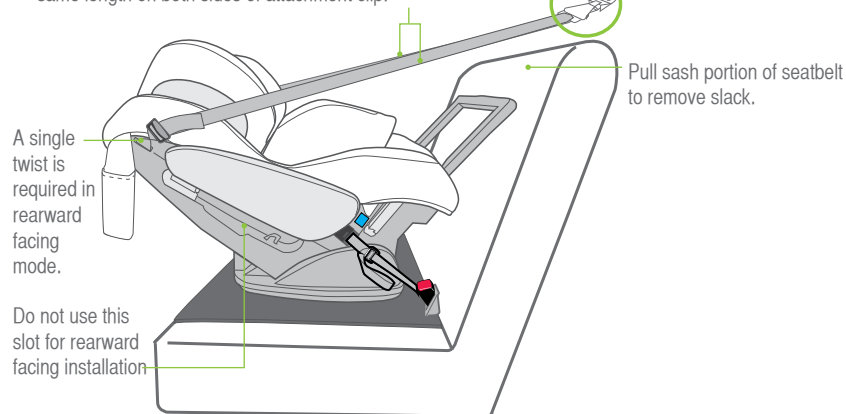
! IMPORTANT:

Do not attach the lower attachment connectors of two separate child restraints to the same ISOFIX low anchorages in your car. Always attach the top tether strap to the child restraint upper anchorage in your car.

Child restraint lower attachment connectors and the ISOFIX low anchorages in your car are designed to withstand only those loads imposed by a correctly fitted child restraint.

HOW TO INSTALL USING ISOFLEX

Ensure the top tether strap is tightened, attached to the upper anchorage point and that the straps are the same length on both sides of attachment clip.



! WARNINGS

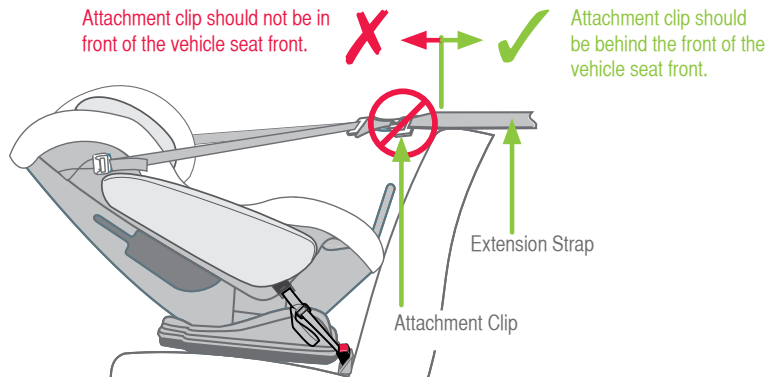
DO NOT USE RESTRAINT IN REARWARD FACING MODE WITHOUT STABILISING BAR FULLY EXTENDED. THE TOP TETHER STRAP MUST ALWAYS BE FITTED WHEN THE CHILD RESTRAINT IS USED IN A VEHICLE. ALWAYS ATTACH THE HOOK AND REMOVE THE SLACK.

ISOFIX Compatible version shown.

HOW TO INSTALL USING ISOFLEX

If the car's child restraint anchor fitting is behind the vehicle seat back you may need to use an extension strap as part of the top tether installation.

IMPORTANT: If using an Extension Strap, positioning the attachment clip above the child may lead to injury in an accident therefore make sure that the attachment clip is not positioned in front of the vehicle seat. Use a shorter extension strap or no extension strap.



It is normal to have some sideways movement if the headrest end is pushed sideways. Ensure that the seatbelt is tight and the slack is removed from the tether strap. If the tether strap is over tightened then the angle of the seat may be affected.



IMPORTANT :

The Top tether strap must be fitted at all times when the baby is in the car when using either the seatbelt or the ISOFLEX connectors.

Always secure the loose end of the top tether strap to prevent it hanging out of the car or being accessible by the child.

THIS RESTRAINT IS NOT SUITABLE FOR USE WHERE THE TOP TETHER STRAP MAY FALL INTO A SPLIT IN THE SEAT BACK OR OFF THE SIDE OF THE SEAT.

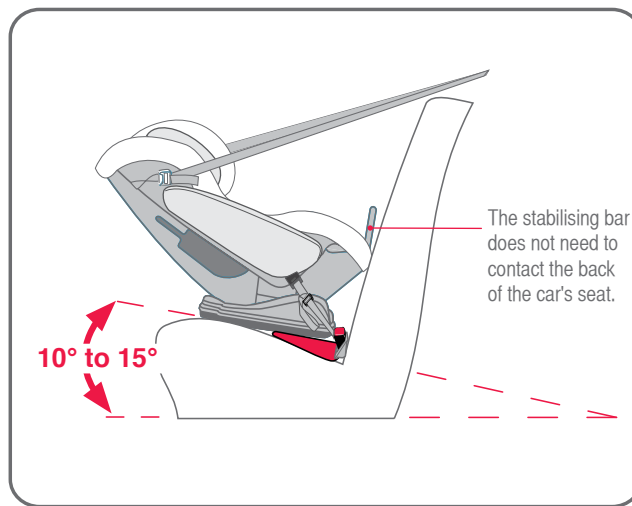
ALWAYS ATTACH TOP TETHER HOOK AND REMOVE SLACK IN THE TOP TETHER STRAP.

HOW TO INSTALL USING ISOFLEX

ANGULAR ADJUSTMENT OF RESTRAINT

Some vehicle seats have more rearward slope than others. If the angle of the seat causes the baby to be too upright for comfort, the angle may be altered by placing a firm packing between the seat and the underside of the base. Packing can be a firmly rolled up towel.

Do not remove all of the rearward slope by over packing. Always leave a rearward slope angle of approximately 10 to 15 degrees as shown

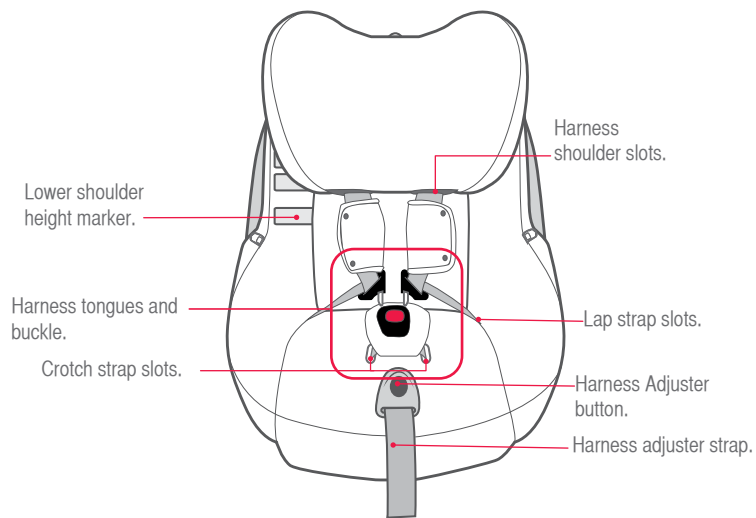


HOW TO USE

ADJUSTING HARNESS POSITION & HEADREST HEIGHT: FOR REARWARD-FACING MODE

Correct fitment of the harness is very important as it restrains the child in the restraint. The headrest must be in the correct position and the harness must fit firmly around upper torso of the child and be positioned so as to leave the child's arms and legs free.

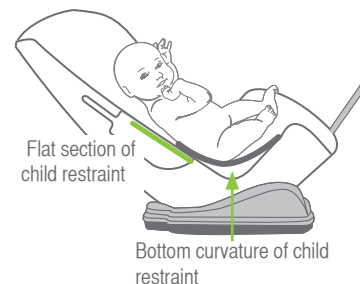
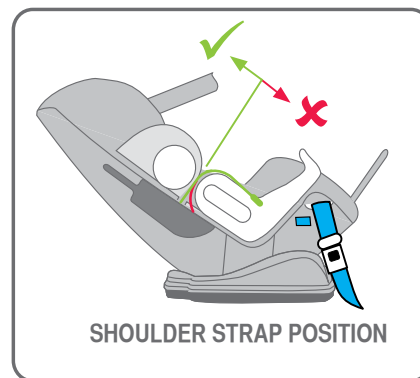
For children in rear facing mode the headrest must be in the position where the **top** of the shoulder strap slots are nearest to the child's shoulders, but not lower than the child's shoulders. Instructions for adjusting the headrest are on page 44. If your child has reached the lower shoulder height marker, the restraint may be converted to "Forward facing" (Refer to Forward facing section starting on page 56).



HOW TO USE

1. The shoulder straps must be in the slots which are nearest to the child's shoulders, but not lower than the child's shoulders. There is only one set of slots so the seat will always have the shoulder straps in place.
2. Use the Infant Safety Cushion™ padded insert when rearward facing for smaller babies until their shoulders reach the lower shoulder height marker. Remove the padded insert to create more room. Remain rearward facing until the child reaches the lower shoulder height marker again.
3. Discontinue the use of the Infant Safety Cushion™ padded insert if there is insufficient room for the baby or their shoulders reach the lower shoulder height marker.

When positioning baby into the restraint make sure baby's back is fully supported onto the flat section and the baby's nappy area (bottom) is resting in the bottom curvature as shown. It is recommended that bulky nappies are not used when baby is travelling in the restraint as they can cause incorrect positioning of the baby's back in the restraint.



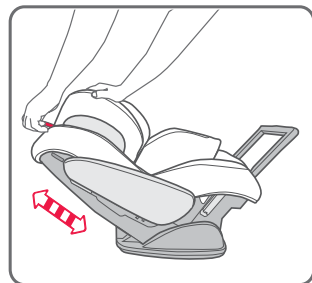
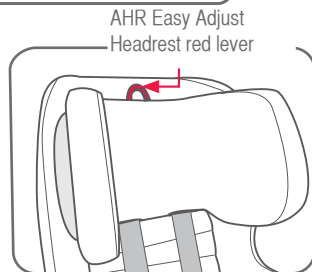
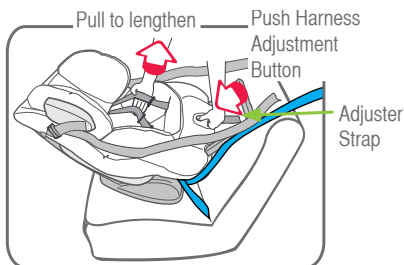
HOW TO USE

ADJUSTING AHR EASY ADJUST™ HEADREST AND HARNESS STRAP HEIGHT

- Before adjusting the headrest, lengthen the harness by pressing harness adjustment button while pulling on both shoulder straps evenly until the harness will accommodate the child.
- You do not need to remove the restraint from the vehicle to adjust the harness or headrest positions. Small adjustments may be made with the child in the seat, the child will need to lean forward to allow the headrest to be adjusted.
- To adjust the headrest, lift the red lever at the top of the headrest then pull up or push down so that the shoulder strap slots are level with or slightly above your child's shoulders. If the headrest is just above the shoulders then the harness level will be correct.
- Release AHR Easy Adjust Headrest Lever so that it locks into position. Ensure that it has locked in position by gently pushing down on it.
- If the headrest is adjusted with the child in the seat, always check that the headrest cover has not bunched up behind child's back.

NOTE: For comfort ensure the bottom edges of the headrest are not contacting the child's shoulders but just above the shoulders.

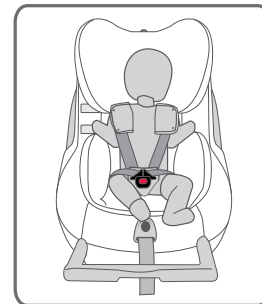
Do not adjust the headrest by pulling on the Side Impact Cushion.



HOW TO USE

PLACING CHILD INTO RESTRAINT

- Ensure the headrest and shoulder straps are adjusted to the correct height for your child (see page 42).
 - Slacken the top tether strap and allow the straps to fall to the sides of the restraint for easy access to the child.
 - Loosen shoulder straps by pressing the harness adjuster and pull both shoulder straps evenly. Pull out the desired amount of slack.
 - Place the two harness tongues into the Buckle Tongue Holder (if fitted).
Move the harness buckle towards the harness adjuster for easier fitment next time you put the infant in the carrier.
 - Place baby into child restraint lying on its back so that the buckle is between the baby's legs. Ensure that baby's arms and legs are free. Make sure baby is dressed to allow the Harness Buckle to be pulled up between baby's legs e.g. a jump suit.
- Never wrap child in a blanket before placing in restraint.



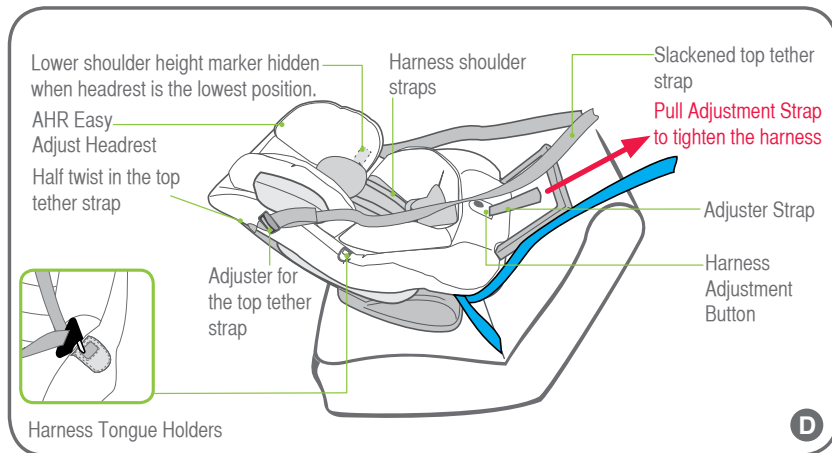
IMPORTANT : Always adjust the height of the shoulder straps as the child grows.



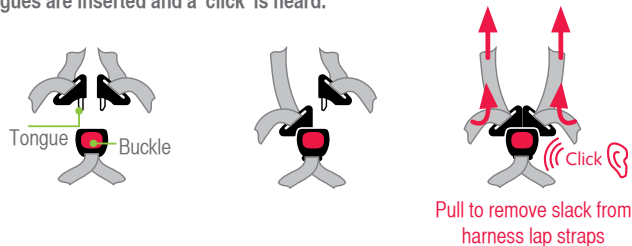
CAUTION:

Do not harness an infant wrapped in a blanket or swaddled as this increases the risk of ejection and injury or death in a crash. The harness needs to fit firmly to the baby, any blanket or other covering may be placed over the harness after the harness is adjusted. Arms and legs must be free and not bound. The legs must sit on each side of the crotch strap.

HOW TO USE



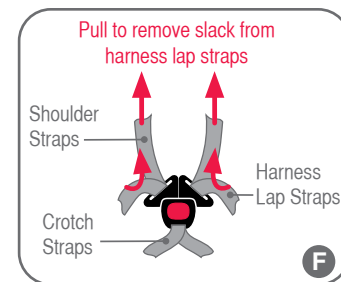
- E. Fit either harness tongue into the harness buckle followed by the other tongue. A click is heard when the last tongue is fully engaged. Should the second tongue not engage - press the red button and reinsert the tongues. Ensure secure engagement by pulling harness straps. If the harness buckle does not engage correctly then it may require cleaning or seek replacement - refer to page 75. **The buckle tongues are fully engaged when both tongues are inserted and a 'click' is heard.**



HOW TO USE

- F. Ensure slack is removed from harness lap strap by pulling shoulder straps then pull harness adjustment strap to adjust harness to a comfortable but firm fit. Ensure that any slack in harness straps is removed. Shoulder harness straps must fit firmly to the child. A loose harness could result in serious injury in an accident. Do not over tighten.

Do not use the restraint if straps do not tighten and contact your local authorised service agent for repair.



WARNING :DO NOT LEAVE CHILDREN UNATTENDED IN THE CAR.

CAUTION: A LOOSE HARNESS IS DANGEROUS.

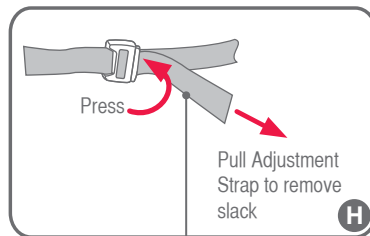
Make sure that nothing is obstructing harness straps and that child's arms and legs are free with the straps in the correct location - see previous page. Do not use the restraint if straps do not tighten and contact BRITAX Childcare Customer Service. Refer to back cover for contact details.

IMPORTANT:

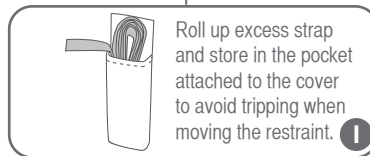
The Infant Safety Cushion™ insert is designed to snugly support baby for extra support and comfort and must be used for smaller babies. Discontinue use when baby's shoulder's reach the lower shoulder height marker, if the insert is a tight fit or creates discomfort for larger babies.

HOW TO USE

- H. Check the adjustable top tether strap by pulling adjustment strap to remove slack as shown. Ensure the strap is not so tight as to lift the seat or deform the headrest.

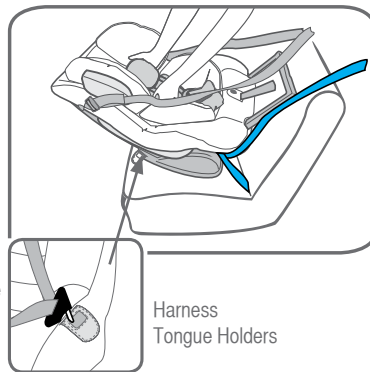


- I. Always roll up excess strap and place in the pocket provided attached to the cover.



REMOVING CHILD FROM RESTRAINT

- A. Press top tether strap adjuster button while pulling top tether straps to slacken. Allow top tether straps to fall to the sides for easy access into restraint.
- B. Push and hold the harness adjustment button while pulling both shoulder harness straps to slacken harness to the desired amount.
- C. Press the red button on harness buckle, both harness tongues will be released. Insert buckle tongues into harness tongue holders to hold harness straps away from the child. Move each shoulder strap to baby's side then pick up baby.

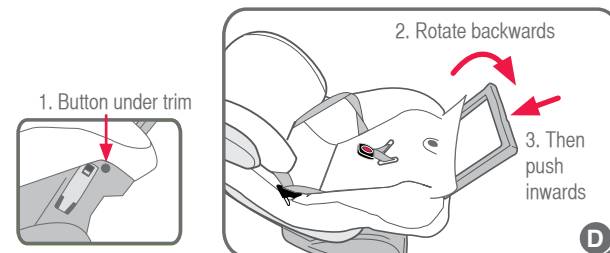
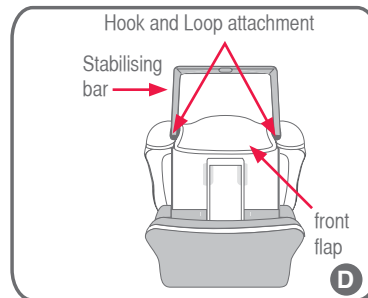
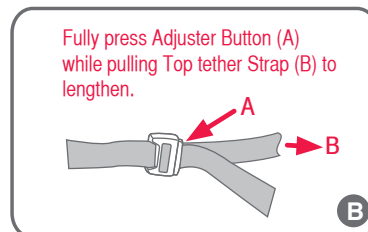


To remove the seat refer to page 50 for ISOFLEX or page 49 for seatbelt installation.

HOW TO REMOVE

REMOVE RESTRAINT FROM VEHICLE DISCONNECT TOP TETHER AND SEATBELT

- A. Disengage the seatbelt buckle and lock-off devices. Remove seatbelt from the restraint belt paths.
- B. Remove the top tether strap from pocket and fully press top tether adjuster button (A) while pulling top tether strap (B) to slacken as shown. In some vehicles loosening of the top tether strap may be difficult. If so, try pushing the restraint against the vehicle seat back or slightly lifting the restraint to release the tension.
- C. Disengage the attachment clip from upper anchorage fitting. The child restraint is now disconnected.
- D. To store the stabilising bar, lift the front flap at the end of the seat, this uncovers the stabilising bar storage recess.
- E. Press the blue button on left side (facing seat) and gently push stabilising bar back and then down into the recessed area.
- F. Re-attach the seat pad at the end of the seat.



HOW TO REMOVE

DISCONNECT TOP TETHER AND ISOFLEX CONNECTORS

A. Remove the top tether strap from pocket and fully press top tether adjuster button (A) while pulling top tether strap (B) to slacken as shown. In some vehicles loosening of the top tether strap may be difficult. If so, try pushing the restraint against the vehicle seat back or slightly lifting the restraint to release the tension.

B. Disengage the attachment clip from upper anchorage fitting. The child restraint is now disconnected.

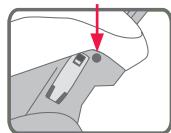
Store loose strap in the storage pocket provided on the cover.

C. To store the stabilising bar, lift the front flap at the end of the seat, this uncovers the stabilising bar storage recess.

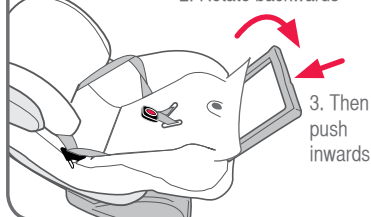
D. Press the blue button on left side (facing seat) and gently push stabilising bar back and then down into the recessed area.

E. Re-attach the seat pad at the end of the seat.

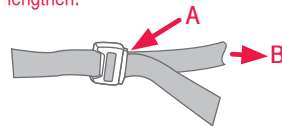
1. Button under trim



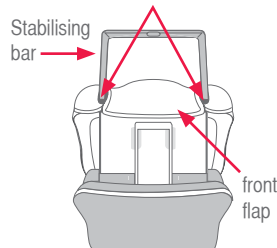
2. Rotate backwards



Fully press Adjuster Button (A) while pulling Top tether Strap (B) to lengthen.



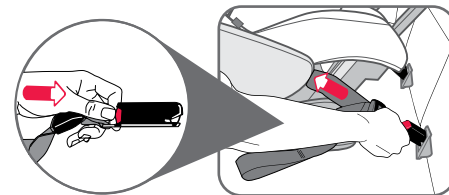
Hook and Loop attachment



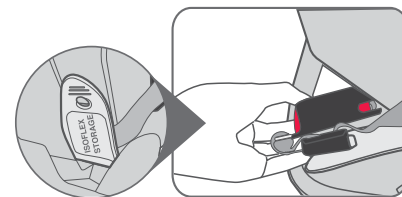
HOW TO REMOVE

The restraint will need to be in the upright position to access the ISOFLEX storage location See page 56.

F. Press each of the red release buttons on the ISOFLEX connectors and remove them from the vehicle ISOFIX low anchorages.

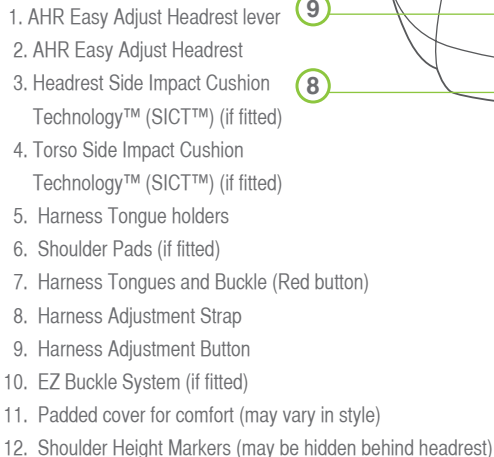


G. Store the ISOFLEX connectors and the insertion guides in the storage location on the seat. Close the cover on the storage location.



NOTE: The insertion guides should be removed when not in use. In vehicles with folding down backrests, the insertion guides must be removed before folding down the backrest.

FORWARD FACING



FORWARD FACING

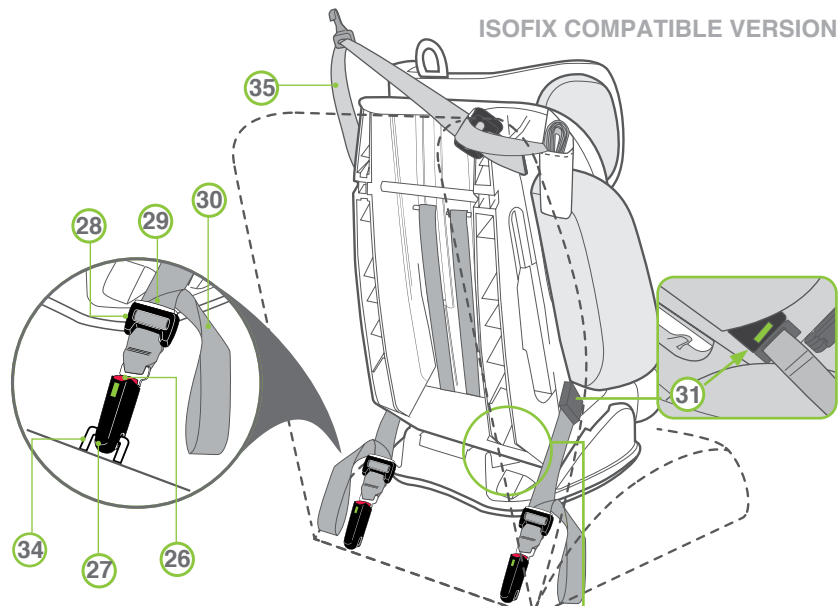
19. Yellow **FORWARD-FACING BELT PATH** labels
20. Forward facing sash belt lock-off
21. Top Tether Storage Pocket
22. Vehicle Upper Anchorage fitting
23. Attachment Clip
24. Top Tether Strap Adjuster
25. Top Tether Strap (stored)



SPECIAL FEATURES: FORWARD-FACING

SUITABLE FOR USE

FORWARD FACING



ISOFLEX CONNECTORS (IF FITTED)

- 26. ISOFLEX Connector Release Button
- 27. ISOFLEX Connector
- 28. ISOFLEX Strap Adjuster
- 29. ISOFLEX Strap Adjuster Button
- 30. ISOFLEX Strap
- 31. Tension Indicator (Green when activated)
- 32. Insertion Guides
- 33. ISOFLEX storage cover
- 34. Vehicle's ISOFIX low anchorage
- 35. Top tether

ISOFLEX Connector is located under the seat

WARNINGS

DO NOT USE RESTRAINT IN FORWARD-FACING MODE WITH THE REAR FACING MODE STABILISING BAR PULLED OUT.

Do not use the restraint without the top tether strap correctly attached.

If your vehicle is not fitted with an anchor point, please contact a Safety Restraint Fitting Station authorised by the relevant State Government Body for correct fitment of the restraint. In New Zealand contact the agent for the vehicle. The top tether strap must be attached to an upper anchorage point using an extension strap if necessary.

Do not use on any vehicle seat which faces sideways or rearwards.

Do not use the Infant Safety Cushion™ insert in forward facing mode.

If an airbag is fitted in the desired seating position where the child restraint is fitted, follow the vehicle manufacturer's warnings and instructions.

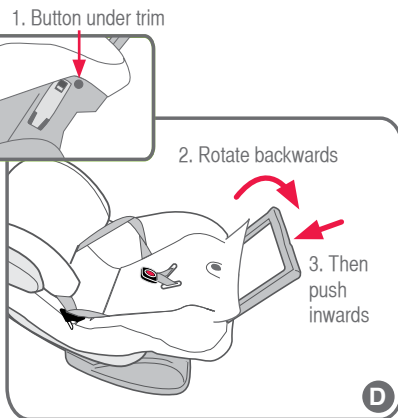
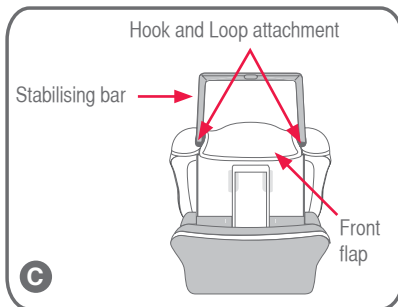
Children are at risk of serious injury if they move to a booster seat too early.

FORWARD FACING

HOW TO INSTALL - PREPARATION

INSTALLING INTO VEHICLE FORWARD FACING (UPRIGHT OR RECLINED)

- Remove the Infant Safety Cushion™ insert as this is no longer required. Refer to page 29.
- To store the stabilising bar, lift the front flap at the end of the seat, this uncovers the stabilising bar storage location.
- Press the blue button on left side (facing seat) and gently push stabilising bar back (away from headrest) then down into the recessed area.
- Re-attach the front flap at the end of the seat.

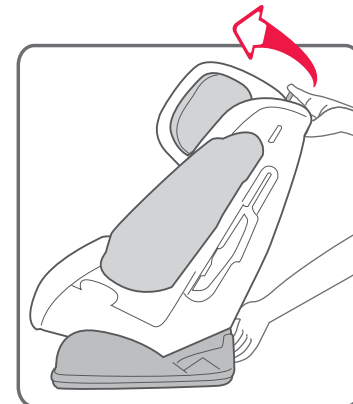


IMPORTANT:
DO NOT USE RESTRAINT IN FORWARD-FACING POSITION WITH THE STABILISING BAR PULLED OUT.

Do not recline into rearward facing position when using restraint in forward facing mode.

HOW TO INSTALL - PREPARATION

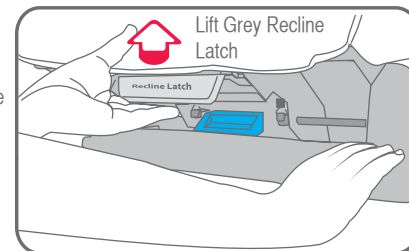
- If previously used in rearward facing mode, convert the restraint to forward facing mode by placing one hand over rear corner of the base and lift the top end of restraint with the other hand until audible click is heard.



RECLINE ADJUSTMENT

- Determine whether an upright or reclined position is preferred and adjust if necessary.

- To adjust the recline, place one hand on the front corner of base firmly, with the other hand push the grey recline latch up to unlock and push back until the restraint is at the desired position. Ensure the grey recline latch is engaged into position by pushing on the restraint.



HOW TO INSTALL - PREPARATION

H. Position restraint in forward-facing mode and align restraint centrally to the chosen seating position.

I. Adjust recline as required prior to installation. Some vehicle seat fabrics (particularly velours) may be damaged by a child restraint used continuously. We recommend the use of a messy mat or thick towel to keep the vehicle seat in good condition.



HOW TO INSTALL USING SEATBELT

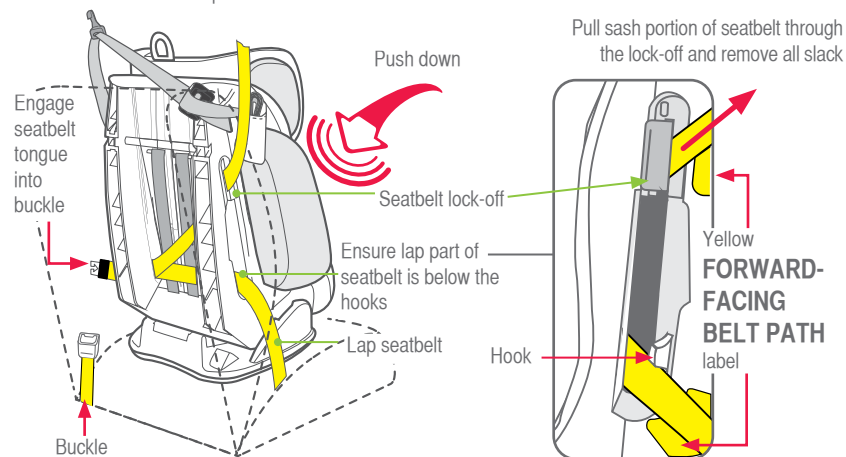
INSTALLING INTO CAR USING SEATBELT AND TOP TETHER

A. Fully lengthen seatbelt. Thread the seatbelt into forward facing seatbelt path (yellow marker) as shown below, ensuring that the seatbelt is behind the harness straps and that the lap part of the seatbelt is below the hook as shown below, on each side.

NOTE: Seatbelt extenders should not be used if the seatbelt is not long enough to secure the child restraint. If they are used then the buckle must not enter the belt path zone.

B. Engage seatbelt buckle and tongue. Firmly push down on the restraint to compress it into the vehicle seat. Whilst pulling the sash belt with the other hand to tighten the lap portion of the vehicle seatbelt. Feed the sash portion into the lock-off and whilst holding the belt tension, press the lock-off lever to clamp the sash belt. For inertia/retractable seatbelts, allow excess belt to feed back into retractor. Ensure all seatbelt slack is removed before applying the lock-off.

C. If using a lap belt only, thread the seatbelt through the back of the seat following the belt path. Keep the belt under the hook on each side. Engage the buckle and tighten the seatbelt while firmly pushing down on the restraint to compress it into the vehicle seat. Lock-off is not used.



HOW TO INSTALL TOP TETHER

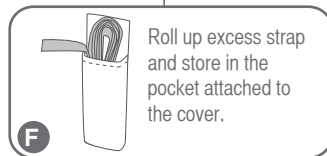
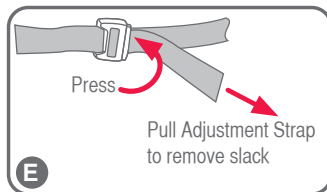
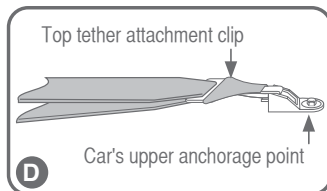
- D. Fit the top tether attachment clip to the anchor fitting as shown. Make sure to remove as many twists as possible from the top tether strap. Refer to the car owners handbook for the location of the child restraint upper anchorage fitting.



WARNING

Always attach the hook and remove slack

- E. Tighten adjustable top tether strap by pulling adjustment strap to remove slack as shown below, but do not over-tighten causing the restraint base to lift off the vehicle seat.
- F. Fold up excess strap and use pocket to store excess strap behind seat away from child's reach.



HOW TO INSTALL TOP TETHER



IMPORTANT :

Always secure the loose end of the top tether strap to prevent it hanging out of the car or being accessible by the child.

THIS RESTRAINT IS NOT SUITABLE FOR USE WHERE THE TOP TETHER STRAP MAY FALL INTO A SPLIT IN THE SEAT BACK OR OFF THE SIDE OF THE SEAT.

Always ensure that the car seatbelt is firmly restraining the restraint on the vehicle seat.

ALWAYS ATTACH TOP TETHER HOOK AND REMOVE SLACK IN THE TOP TETHER STRAP.

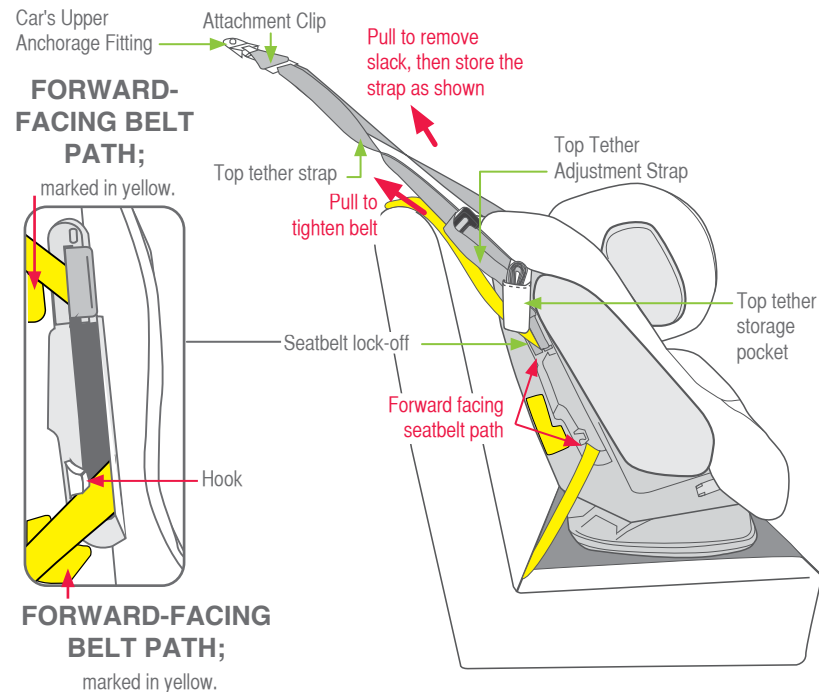
Check that the seatbelt is not twisted and the diagonal belt is only clamped by the lock-off which is located on the opposite side from the car seat buckle.



CAUTION:

CHILDREN CAN BE INJURED OR RESTRAINTS AND TOP TETHER STRAP DAMAGED BY UNSECURED CARGO IN A COLLISION. SECURE OR REMOVE HAZARDOUS CARGO BEFORE USING THIS CHILD RESTRAINT.

HOW TO INSTALL TOP TETHER



IMPORTANT: Always secure the loose end of the top tether strap to prevent it hanging out of the car or being accessible by the child.

THIS RESTRAINT IS NOT SUITABLE FOR USE WHERE THE TOP TETHER STRAP MAY FALL INTO A SPLIT IN THE SEAT BACK OR OFF THE SIDE OF THE SEAT.

HOW TO INSTALL USING ISOFLEX CONNECTORS

WHAT ARE ISOFIX LOW ANCHORAGES IN A VEHICLE?

ISOFIX low anchorages are fixed, standardised anchoring points for securely installing an ISOFIX compatible child restraint in a vehicle with ISOFIX low anchorages. It has now become an international standard for vehicles. This anchoring technology minimises installation mistakes by optimising the protective effect of a the connection between vehicle and ISOFIX compatible child restraint.

INSTALLING THE RESTRAINT INTO THE CAR (USING ISOFLEX CONNECTORS IF FITTED)

ISOFIX low anchors of the vehicle seat

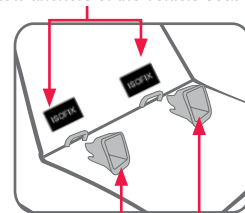
To prevent damage to vehicle seat it may be necessary to remove or open a trim covering the ISOFIX low anchorages.

- Locate the ISOFIX Low Anchorages in the vehicle seat bight. The location may be identified by one of the following symbols, or the anchorage bars may be visible.

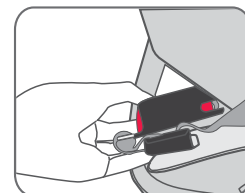
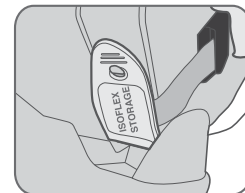


If you cannot locate them, check your vehicle owners manual.

- If necessary, clip the two insertion guides to the two ISOFIX fastening points of the vehicle seat (between seat and backrest). The guides are provided to allow easier alignment of the child restraint. The guides are not required where anchors are visible or there are already guides provided in the vehicle seat.
- With the restraint upright, remove both ISOFLEX connectors from storage on the rear of the restraint by lifting the cover flap the clip as shown. Close the flap covers.



Insertion guides



HOW TO INSTALL USING ISOFLEX CONNECTORS

INSTALLING INTO THE CAR USING ISOFLEX AND TOP TETHER CONNECTORS IF FITTED

D. Recline instructions are shown on page 28.

E. Press and hold the ISOFLEX strap adjuster button and pull the connector strap to fully lengthen. Repeat for both connector straps.

F. Place the restraint in the desired location on the vehicle seat between the two ISOFIX low anchorages. Ensure the child seat is against the vehicle seat back as shown. Engage the ISOFLEX connectors into each ISOFIX low anchorage. A click may be felt a green indicator will show on the top of the ISOFLEX connector when it has engaged. Pull each strap to ensure both lower anchorage connectors are engaged.

NOTE: Pull against the ISOFLEX connector to verify that it is secure.

G. Push downwards and rearward on the restraint to compress it into the vehicle seat. Whilst compressed into the seat, pull on adjuster strap to remove all slack and tighten. Repeat for the adjuster strap on the other side of the restraint. The two tension indicators will show 'green' indicating adequate tension has been applied.

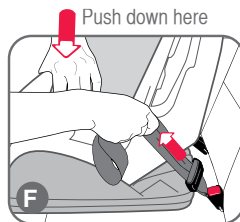
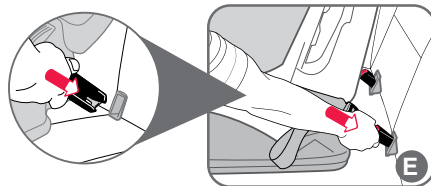
H. Connect the top tether as directed on page 60.

IMPORTANT:

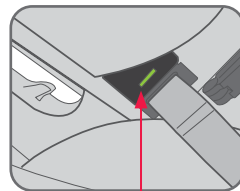
Do not attach the lower attachment connectors of two separate child restraints to the same ISOFIX low anchorages in your car.

Always attach the top tether strap to the child restraint upper anchorage in your car.

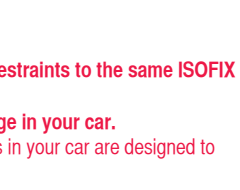
Child restraint lower attachment connectors and the ISOFIX low anchorages in your car are designed to withstand only those loads imposed by a correctly fitted child restraint.



Push down here



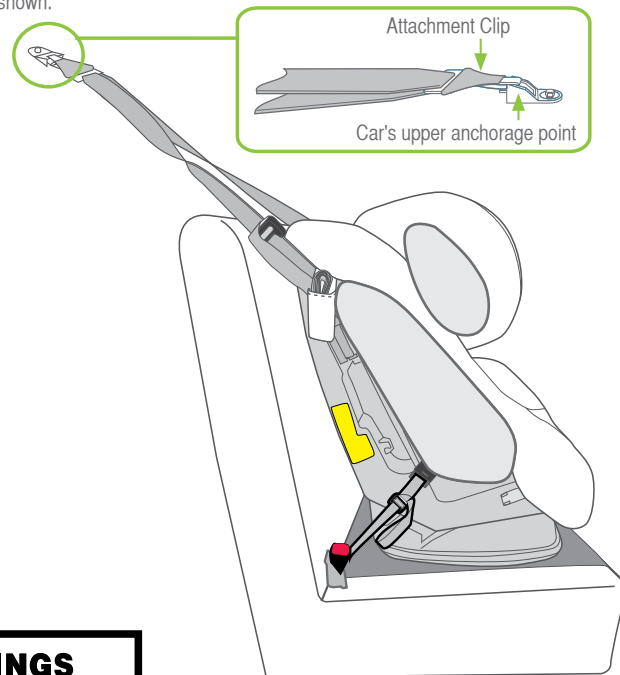
Pull ISOFLEX adjuster strap to tighten



Tension indicators

HOW TO INSTALL USING ISOFLEX

Platinum SICT™ version shown.



WARNINGS

DO NOT USE RESTRAINT IN REARWARD FACING MODE WITHOUT STABILISING BAR FULLY EXTENDED.
THE TOP TETHER STRAP MUST ALWAYS BE FITTED WHEN THE CHILD RESTRAINT IS USED IN A VEHICLE.
ALWAYS ATTACH THE HOOK AND REMOVE THE SLACK.

HOW TO USE

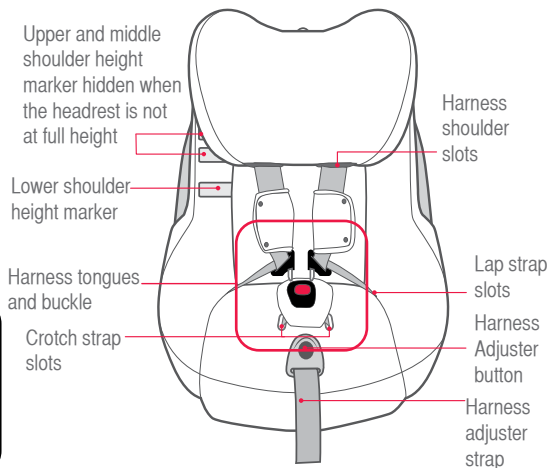
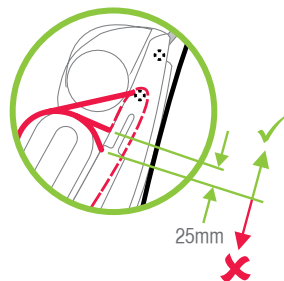
ADJUSTING HARNESS POSITION & HEADREST HEIGHT: FOR FORWARD-FACING MODE

Correct fitment of the harness is very important as it restrains the child in the restraint. The headrest must be in the correct position and the harness must fit firmly around upper torso of the child and be positioned so as to leave the child's arms and legs free.

The headrest must be in a position where by the The shoulder straps must be in the slots which are nearest to the child's shoulders, but not more than 25 mm below the child's shoulders.

Always adjust the height of the shoulder straps as the child grows.

If the headrest is in the top position and the shoulders are above the upper shoulder height marker then the child is too tall for the restraint and the restraint should not be used; move to next type of restraint (see pages 21).



NOTE: This child restraint does not require the shoulder straps to be disconnected to adjust their height, only the headrest needs to be moved to adjust the shoulder strap position.

ADJUSTING AHR EASY ADJUST™ HEADREST AND HARNESS STRAP HEIGHT

A. Lengthen harness by pressing harness adjustment button while pulling on both shoulder straps evenly until the harness will accommodate the child before adjusting the headrest.

B. You do not need to remove the restraint from the vehicle to adjust the harness or headrest positions. Small adjustments may be made with the child in the seat. The child will need to lean forward to allow the headrest to be adjusted.

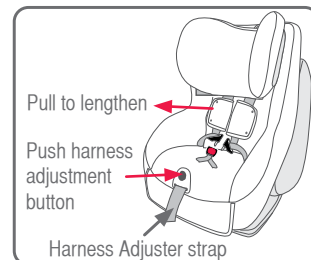
C. To adjust the headrest, lift the red lever at the top of the headrest then pull up or push down so that the shoulder strap slots are level with or slightly above your child's shoulders.

D. Release AHR Easy Adjust Headrest Lever so that it locks into position. Ensure that it has locked in position by gently pushing down on it.

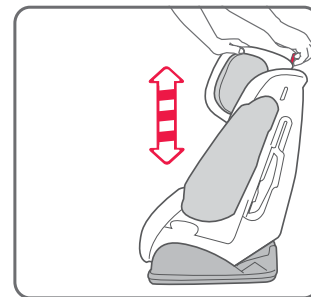
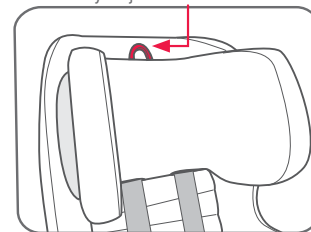
E. If the headrest is adjusted with the child in the seat, always check that the headrest cover has not bunched up behind child's back.

NOTE: For comfort ensure the bottom edges of the headrest are not contacting the child's shoulders but just above the shoulders.

Do not adjust the headrest by pulling on the Side Impact Cushion.



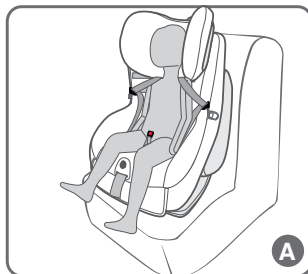
AHR Easy Adjust Headrest red Lever



HOW TO USE

PLACING CHILD IN THE RESTRAINT

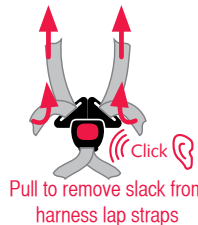
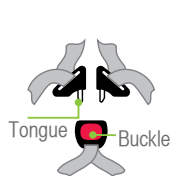
- A. Ensure the headrest and shoulder straps are adjusted to the correct height for your child (see page 66. Loosen shoulder straps by pressing the harness adjuster and pull both shoulder straps evenly. Pull out the desired amount of slack. Place the two harness tongues into the Buckle Tongue Holder (if fitted). Move the harness buckle towards the harness adjuster for easier fitment next time you put the infant in the carrier.
- B. Place child in the restraint and feed each arm through the shoulder straps. Pull harness buckle up between child's legs.



! IMPORTANT :

Always adjust the height of the shoulder straps as the child grows.

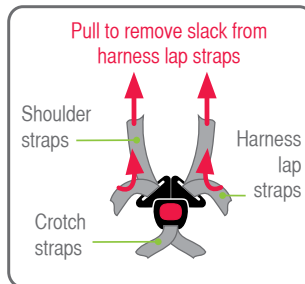
- C. Fit either harness tongue into the harness buckle followed by the other tongue. A click is heard when the last tongue is fully engaged. Should the second tongue not engage - press the red button and reinsert the tongues. Ensure secure engagement by pulling harness straps. If the harness buckle does not engage correctly then it may require cleaning or seek replacement - refer to page 75. **The buckle tongues are fully engaged when both tongues are inserted and 'click' is heard.**



HOW TO USE

- D. Ensure slack is removed from harness lap strap by pulling shoulder straps then pull harness adjustment strap to adjust harness to a comfortable but firm fit. Ensure that any slack in harness straps is removed. Shoulder harness straps must fit firmly to the child. A loose harness could result in serious injury in an accident.
- E. Pull the harness adjustment strap to remove slack so the harness fits the child with minimal slack. Do not over tighten.

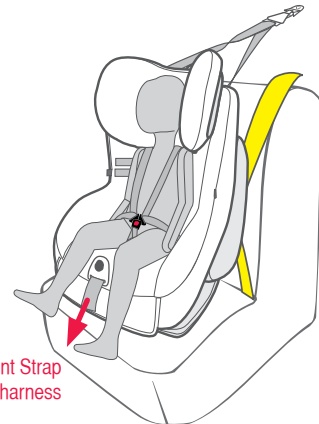
Do not use the restraint if straps do not tighten and contact your local authorised service agent for repair.



! WARNING :DO NOT LEAVE CHILDREN UNATTENDED IN THE CAR.

! CAUTION: A LOOSE HARNESS IS DANGEROUS.

Make sure that nothing is obstructing harness straps and that child's arms and legs are free with the straps in the correct location - see previous page. Do not use the restraint if straps do not tighten and contact BRITAX Childcare Customer Service. Refer to back cover for contact details.



HOW TO REMOVE

REMOVING CHILD FROM RESTRAINT

- Push and hold the harness adjustment button while pulling both shoulder harness straps to slacken harness to the desired amount.
- Press the red button on harness buckle, both harness tongues will be released. Insert buckle tongues into harness tongue holders to hold harness straps away from the child. Move each shoulder strap side into the Harness tongue holders.

Harness tongue holders

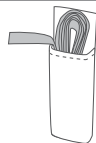
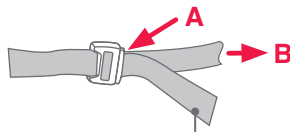


To remove the seat refer to page 71 for ISOFLEX or below for seatbelt installation.

DISCONNECT TOP TETHER AND SEATBELT

- Remove the top tether strap from pocket and fully press top tether adjuster button (A) while pulling top tether strap (B) to slacken as shown. In some vehicles loosening of the top tether strap may be difficult. If so, try pushing the restraint against the vehicle seat back or slightly lifting the restraint to release the tension.
- Disengage the attachment clip from upper anchorage fitting.
- Store loose strap in the storage pocket provided on the cover.
- Disengage the seatbelt lock-off devices on both sides of the restraint.
- Disengage seatbelt tongue from buckle and remove the seatbelt from the restraint belt paths. Allow seatbelt to feed back into seatbelt retractor.

Fully press Adjuster Button (A) while pulling top tether strap (B) to lengthen.



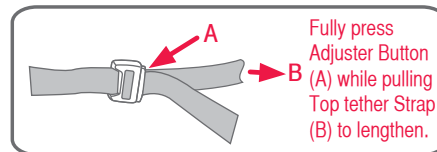
Roll up excess strap and store in the pocket attached to the cover to avoid tripping when moving the restraint.

HOW TO REMOVE

REMOVE RESTRAINT FROM VEHICLE

DISCONNECT TOP TETHER

- Remove the top tether strap from pocket and fully press top tether adjuster button (A) while pulling top tether strap (B) to slacken as shown. In some vehicles loosening of the top tether strap may be difficult. If so, try pushing the restraint against the vehicle seat back or slightly lifting the restraint to release the tension.

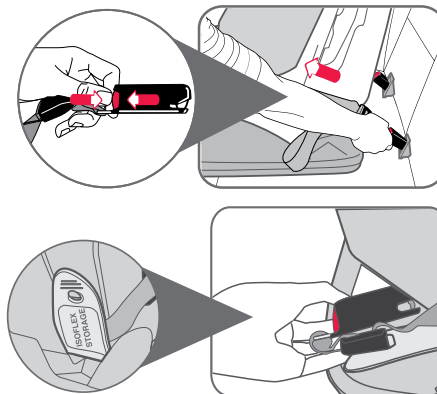


- Disengage the attachment clip from upper anchorage fitting.

Store loose strap in the storage pocket provided on the cover.

DISCONNECTING THE ISOFLEX CONNECTORS

- The restraint will need to be in upright position to access the ISOFLEX storage location.
- Press each of the red release buttons on the ISOFLEX connectors and remove them from the vehicle ISOFIX low anchorages.
- Store the ISOFLEX connectors and the insertion guides in the storage location on the seat. Close the cover on the storage location.



NOTE: The insertion guides should be removed when not in use. In vehicles with folding down backrests, the insertion guides must be removed before folding down the backrest.

HOW TO INSTALL IN AN AIRCRAFT

ONLY MERIDIAN™ IS SUITABLE FOR USE ON AN AIRCRAFT WHEN INSTALLED FORWARD FACING.

HOW TO INSTALL USING AIRCRAFT LAP BELT

The child restraint must be used in accordance with the aircraft procedures, and any directions from the aircraft operator, pilot or crew.

Some child restraints may not fit in smaller aircraft and can not be used with aircraft seatbelts that contain airbags unless they can be disabled.

Inform the aircraft operator that a child restraint is intended to be used on the aircraft when booking the flight as the child restraint may not be suitable for use in that operator's aircraft.

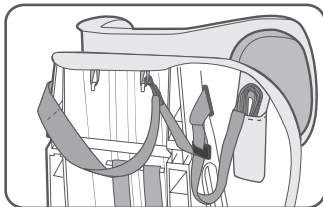
Follow the instructions of the flight crew or pilot.

For use of the child restraint in cars in countries other than Australia and New Zealand as follows:

- (A) The child restraint may not be acceptable for use in cars.
- (B) The user may need to consult the country's local authorities, car hire companies, car insurance companies, etc. for advice.

Fit the child restraint to the aircraft seat by:

- A. Set the recline position to fully upright. Position the restraint in forward-facing mode and align centrally with the chosen seating position. (We recommend that you fit the restraint nearest the window or in a middle seat if in centre seating area, so it will not interfere with an adult exiting the row of seats. If possible, lift the armrests out of the way to improve access to installing the aircraft lap belt. However airline staff will direct you to the desired seat position.
- B. The top tether is not required to be used to fit the child restraint in an aircraft. Shorten the top tether strap and store in its storage pocket. Attach the attachment clip to the elastic loop provided on the restraint as shown.



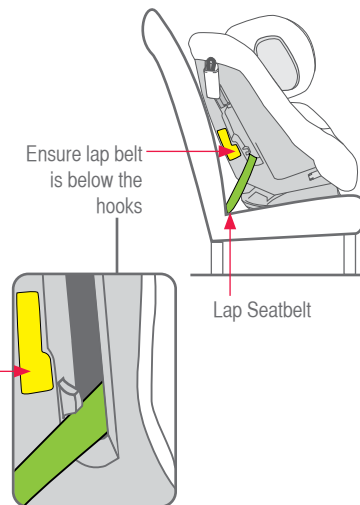
IMPORTANT:

When the tether hook is stored on the loop always remember to attach the upper tether strap when reinstalling in the car.

HOW TO INSTALL IN AN AIRCRAFT

- C. Fully lengthen lap belt. Thread the lap belt into **BELT PATH - FORWARD FACING** lap belt path (yellow marker) as shown, ensuring that the lap belt is behind the harness straps and that the lap part is below the hook as shown, on each side. Engage lap belt buckle and tongue.

- D. Push down on the restraint and remove all slack from the lap belt.



Aircraft label is located on the back of the restraint and demonstrates suitability for use on an aircraft.



This Child Restraint System meets the standards for use in aircraft as recommended by the Civil Aviation Safety Authority of Australia and the Civil Aviation Authority of New Zealand.

Only to be used on aircraft with the permission of the aircraft operator, pilot and crew.

SUITABLE FOR FORWARD USE

The top tether strap is not required to be used onboard aircraft and should be stowed securely.

CARE & MAINTENANCE

REGULAR CARE OF THIS RESTRAINT:

Please check the following items regularly to ensure the safety of your child:

- A. Check the webbing of the straps for fraying,
- B. Check there are no cracks in moulding,
- C. Check the harness adjuster is operating and is clamping the webbing,
- D. Ensure the buckle is free of fluff, liquid or other matter that may enter the buckle slots. Clean the buckle if it is sluggish to engage. See next page.
- E. If any part of the restraint is cracked or broken, seek repair immediately - contact Britax Customer Service 1300 303 330

CLEANING CAR SEAT

Use only mild soap and water to clean all metal and plastic parts of the restraint. Do not use chemicals or cleaning agents.

HARDWARE: Use only mild soap and water to clean all webbing, metal and plastic parts of your child's restraint, using a damp cloth.

Do not use chemicals or cleaning agents. Do not try and place any hardware into a washing machine.

STRAPS/HARNESS: We would only recommend that you spot clean the straps/harness with a damp sponge. The harness straps can be soaked, however they must be thoroughly dried without excessive heat (never tumble dry). The harness straps should not be placed in a washing machine as this may cause damage to the stitching or even damage your washing machine.

COVER: The restraint has a flame retardant cover which is removable for cleaning, please clip the hook and loop together on the cover and seat pad (if supplied) to prevent any damage to the cover when washing. Cleaning instructions are on the care label attached to the cover. For machine washable covers use gentle cycle, cold water only, rinse well and dry on a flat surface. Do not tumble dry, bleach or dry-clean. May be hand washed. Follow the care label on the cover.

CARE & MAINTENANCE

BUCKLE OPERATION

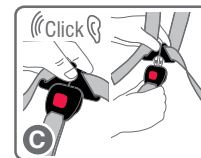
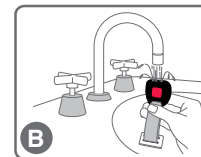
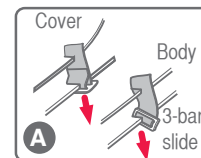
To ensure the buckle remains operational the inside of the buckle must be kept free of liquids, sand, dirt, fluff, food or similar substances. If the buckle is not operating or you do not hear a strong audible click when second tongue is inserted then the buckle needs to be washed or replaced. The buckle is fully engaged when both tongues are inserted and a 'click' is heard. Contact Customer Service for assistance.

TO CLEAN HARNESS BUCKLE:

If sticky liquids such as baby formula, fruit juice, etc. get inside your harness buckle, it may become sluggish. An indication of a sluggish harness buckle is that you cannot hear a click when engaging the last harness tongues. To restore the harness buckle to good working order it needs to be cleaned as follows:

- A. Remove the harness buckle from the restraint: From the underside of the restraint pull each crotch strap 3-bar slide, turn the 3-bar slide on its side and push back through the slot.
- B. Place the harness buckle under warm (max. 40 degrees Celsius) running water as shown below. Let the water run through the mouth of the buckle for five minutes. Check the harness buckle is clean by engaging the harness tongues and buckle several times until you hear a click.
- C. If you still cannot hear a strong audible click then repeat the cleaning process several times.
- D. Refit the harness buckle to the restraint ensuring the red button facing outwards and the 3-bar slide is fed through the same slots.

If the Harness Buckle cannot be returned to its original working condition then contact BRITAX Customer Service for assistance.



CARE & MAINTENANCE

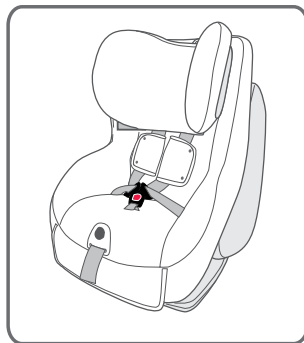
COVER (STYLE MAY VARY)

The restraint has a flame retardant cover which is removable for cleaning. Cleaning instructions are on the care label attached to the cover. If fluffy cover is fitted then washing the cover prior to use will remove excess fluff.

Drying the Infant Safety Cushion™ insert will take additional time as the impact foam will absorb moisture. Before washing re-engage the hook and loop on the cover to prevent the 'hook' damaging the fabric.

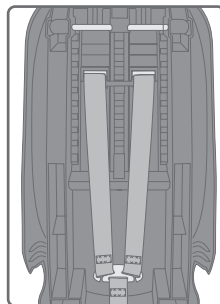
The cover has been designed to protect your child when seated in the restraint. Care should be taken if children either eat or drink while in the restraint as some food or drink products may cause damage or marking to the cover. Wash or clean immediately.

Do not pull sticky items from covers as the cover may be damaged - soak in water and gently remove.



IMPORTANT:

Do not pull sticky items from covers as the cover may be damaged - soak in water and gently remove.

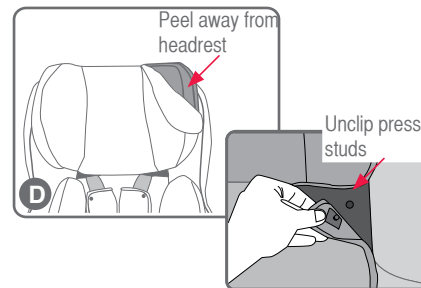


NOTE: This restraint is fitted with a harness system that does not need to be removed to adjust the harness or remove the cover.

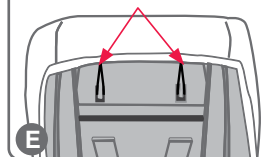
CARE & MAINTENANCE

TO REMOVE COVER:

- Remove the restraint from vehicle.
- Disengage harness tongues from harness buckle.
- Remove any accessories such as the Infant Safety Cushion™ insert and EZ Buckle System.
- Lift headrest to the highest position. Remove headrest cover by unclipping the press studs. Peel the elastic loops from behind the headrest. Pull the headrest slightly forward and peel headrest trim away from the seat.



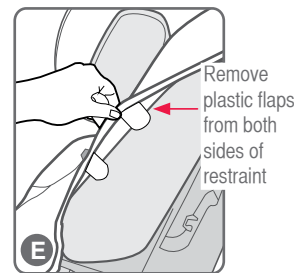
Unhook elastic loops from the back of the restraint



NOTE: If the restraint is fitted with Side Impact Cushions, the headrest trim has elastic which pulls over the Side Impact Cushions that can be easily removed and replaced.

- To remove the cover, unhook elastic loops from behind the restraint and at the front of the restraint underneath the stabilising bar.

If fitted with Torso SICT- remove plastic flaps from the both sides of the cover (next to air cushion). Peel away from restraint while feeding through the harness adjuster button moulding, harness tongues and strap through the lap and crotch strap slots in the cover and over the headrest moulding.



CARE & MAINTENANCE

TO REPLACE COVER:

- A. Replace cover by feeding the harness tongues and shoulder straps through lap strap slots.
- B. Stretch the cover over the top of the restraint first, then the sides of the child restraint, and then stretch the cover around the rim of the restraint. Feeding through the harness adjuster button and crotch strap.
- C. If fitted with Torso SICT - clip the plastic flaps in slots of air cushion, on either side of restraint.
- D. Replace the elastic loops behind the restraint and at the front of the restraint underneath the stabilising bar.
- E. Lift the headrest to the highest position. Fit the headrest cover over the headrest and feed the harness through the open slots in cover, ensure elastic is at the rear of headrest, behind cushions. Clip in press studs together.
- F. Refit the Infant Safety Cushion™ insert, if required. See page 79 for suitability.
- G. Ensure the harness straps are not twisted.

ONLY USE SAFE-N-SOUND SEAT COVERS THAT ARE DESIGNED AND TESTED FOR USE WITH THIS PRODUCT.



VERY IMPORTANT:

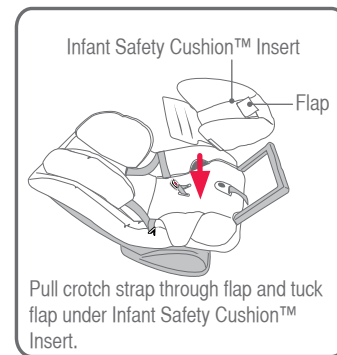
Only replace the cover with Safe-n-Sound supplied replacement cover with identical shoulder height markers or a replacement cover meeting AS/NZS 8005.

CARE & MAINTENANCE

TO REPLACE INFANT SAFETY CUSHION™ INSERT

The Infant Safety Cushion™ insert is designed to snugly support baby for extra support and comfort and must be used for small babies when Rearward-Facing. Discontinue use when the Infant Safety Cushion™ insert is a tight fit or creates discomfort for larger babies. Do not use when in Forward-Facing mode.

- A. Disconnect the buckle and place the insert under the shoulder and lap straps.
- B. Feed the crotch strap through the flap in the Infant Safety Cushion™ Insert and re-connect buckle.
- C. Tuck the flap underneath the Infant Safety Cushion™ insert.



NOTE: Discontinue the use of Infant Safety Cushion™ Insert once the child's shoulders reach the Lower Shoulder Height Marker.

ACCESSORIES

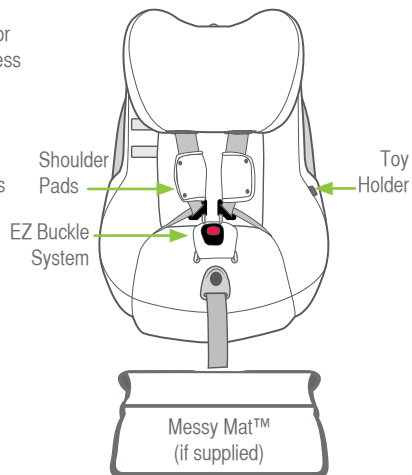
Use of aftermarket accessories, that is, accessories not provided with this child restraint can reduce the safety of the child restraint and may cause injury or death. Always follow the instructions covering the use of accessories in this section or the instructions provided with accessory. If an aftermarket accessory is used that is not recommended by Britax then ensure that the accessory is for this restraint and compliant with AS/NZS 8005 and stated as suitable for use with this child restraint.

The following instructions apply to accessories that may be supplied with this restraint at point of purchase. If not, a variety of Britax Safe-n-Sound accessories are available from various retailers of Britax Safe-n-Sound products.

SHOULDER PADS

Shoulder pads are designed to provide extra comfort for baby or child and are easily fitted to the shoulder harness straps:

- Pull apart the fasteners and remove shoulder pads from harness.
- Re-fit shoulder pads to harness and attach fasteners for use.



ACCESSORIES

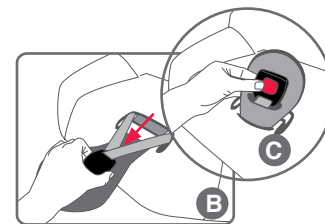
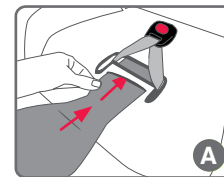
EZ BUCKLE SYSTEM (WHERE FITTED)

EZ Buckle system retains the harness buckle in a forward position and prevents the child from sitting on the buckle when boarding. Aids in opening harness and placing child in the seat.

A. Feed EZ Buckle system through slot in front of crotch buckle slot


B. Feed Crotch buckle through slot in EZ Buckle system as shown.

Ensure that the EZ Buckle system is behind the buckle- i.e. the buckle is in front. See illustration C.

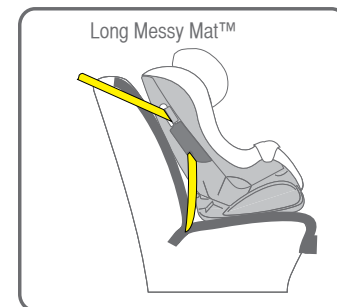


MESSY MAT™ (IF SUPPLIED)

The messy mat has been specifically designed to protect your vehicle seat from children's shoes rubbing against it. If the Messy Mat™ has been supplied it must be used to protect the car upholstery.

**CAUTION:**

The Messy Mat™ pocket is only for small, light items. DO NOT overload the pocket with heavy, bulky items as this may damage the pocket or cause passengers to trip over them.



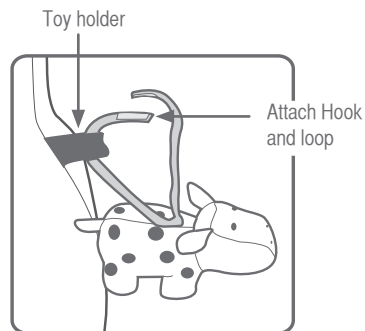
ACCESSORIES

TOY HOLDER

The toy holder is located on the side of the cover.

Feed through strap and attach hook and loop.

Do not attach toys with long straps or cord. The length should not exceed 360mm otherwise the strap or cord could become a strangulation hazard.



INSTALLATION OF CAR'S UPPER ANCHORAGE POINT

Consult the vehicle owner's handbook for location of anchorage fittings or anchorage points and the possible use of spacers. Some vehicles may have an anchor fitting fitted by the vehicle manufacturer. If anchorage points cannot be found refer to car manufacturer or local child restraint fitting station or traffic authority for optimum position of upper anchorage point and the use of spacers.

TOP TETHER STRAP



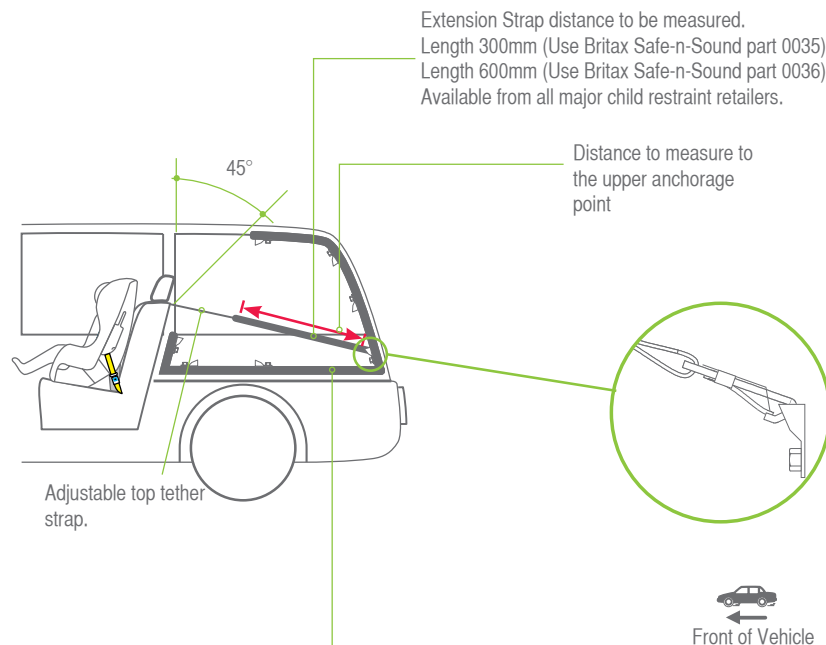
IMPORTANT:

THE ATTACHMENT CLIP COVER MUST ALWAYS BE USED AS IT PREVENTS THE RISK OF INCORRECT FITMENT OF THE ATTACHMENT CLIP TO THE UPPER ANCHORAGE POINT. ALWAYS ENSURE THAT THE ATTACHMENT CLIP IS CORRECTLY ENGAGED TO THE UPPER ANCHORAGE POINT AND NOT HOOKED OR FITTED TO ANY OTHER OBJECT BEFORE EACH USE OF THE RESTRAINT. THIS IS ESPECIALLY IMPORTANT IN VEHICLES SUCH AS STATION WAGONS, VANS, HATCH BACKS OR VEHICLES WITHOUT A FIXED PARCEL SHELF, SINCE THE ANCHOR POINT IS USUALLY NOT VISIBLE.

IMPORTANT INSTALLATION NOTE:

In some vehicles the upper anchorage point in the rear vertical panel can only be installed in one way. Please refer to vehicle owner's handbook or a child restraint fitting station for correct method.

INSTALLATION OF CAR'S UPPER ANCHORAGE POINT



The shaded areas of this diagram illustrate the possible locations of the upper anchorage point. Within each shaded area is an upper anchorage point showing the correct way to install the fitting. Ensure the upper anchorage point is aligned as illustrated unless stated otherwise in the vehicle owner's handbook.

INSTALLATION OF CAR'S UPPER ANCHORAGE POINT

IF THE CAR IS FITTED WITH CHILD RESTRAINT UPPER ANCHORAGE POINT

Locate the upper anchorage point behind the rear seating position. (Consult the car owners handbook for the location of the upper anchorage point). The upper anchorage point should be directly behind and central to the restraint. Remove thread plug from the parcel shelf/floor/roof, etc. and install attachment bolt and fitting as shown in Fig 1.

CAUTION: DO NOT OVERTIGHTEN ATTACHMENT BOLT. OVERTIGHTENING MAY FRACTURE OR BREAK BOLT. MAXIMUM TORQUE IS 20 Nm(14.75 ft.lb.)

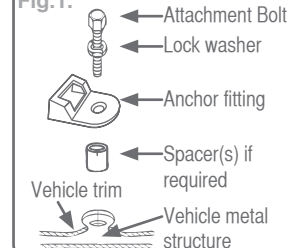
Note: Minimum of five full turns of attachment bolt is required before tightening force is applied.

IF THE CAR IS NOT FITTED WITH CHILD RESTRAINT UPPER ANCHORAGE POINTS

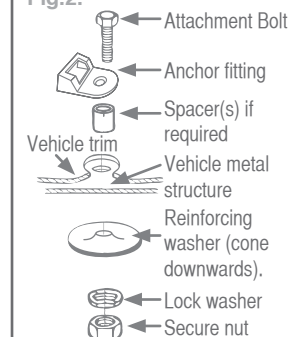
For Sedans only - Drill 9mm diameter hole in the parcel shelf on the centre line of the seating position as shown in Fig 3. Before drilling the hole, check the underside for accessibility. Install the attachment bolt as shown in Fig 2. It is recommended that this installation be carried out by a child restraint fitting station or licenced motor mechanic.

For vehicles other than Sedans - In Australia, consult your nearest child restraint fitting station or traffic authority for vehicle inspection to find the best, correct position for the placement of the upper anchorage point, and for the correct attachment bolt length and use of spacers. In New Zealand, consult the agent for the vehicle. Note to Queensland purchasers: The installation of anchorage points must be approved by authorised officers appointed by Queensland Transport. Authorised officers can be sourced from all Queensland Transport Customer Service and Queensland Ambulance Service Centres.

UPPER ANCHORAGE FITTING Fig.1.



UPPER ANCHORAGE FITTINGS FOR SEDANS ONLY Fig.2.



INSTALLATION OF CAR'S UPPER ANCHORAGE POINT

ONLY USE A 5/16 UNC GRADE 5 BOLT. IF THE BOLT IS NOT THE CORRECT LENGTH THE CAR MANUFACTURER'S HAND BOOK CAN PROVIDE ADVICE ON THE CORRECT LENGTH BOLT.

WARNING

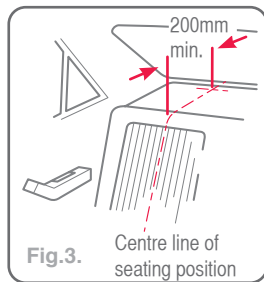
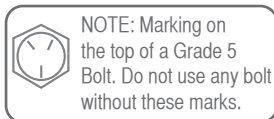
CHILD RESTRAINTS MUST NOT BE ATTACHED TO UNSOUND METAL OR TO WOOD, OR SYNTHETIC STRUCTURES. WHEN DRILLING 9 MM HOLE DO NOT DRILL THROUGH FUEL LINES, FUEL TANKS, ELECTRICAL WIRING, OR RADIO SPEAKERS. WEBBING STRAPS MUST BE PROTECTED FROM SHARP CORNERS AND EDGES. THE ANCHOR FITTING MUST BE USED ONLY AS DESCRIBED ABOVE. IT MUST NOT BE HOOKED ONTO ANY OTHER OBJECT.

CAR INSTALLATION ACCESSORIES

(From retailers of Britax Safe-n-Sound products)

EXTRA ANCHOR KITS: Available for using the restraint in additional cars.
Re-order no: 0038

EXTENSION STRAPS: May be required for cars without a fixed parcel shelf.
Re-order no: 0035 (length 300mm) or
0036 (length 600mm)



TRAVELLING TIPS

SAFETY

Never hold a baby in arms when riding in a motor vehicle. In this position the baby could be thrown against the dashboard, windscreen or other occupant and suffer serious injury or death.

When riding in a motor vehicle never nurse a baby and use the same seat belt for both of you. In this position the baby or child could be crushed.

Never breast feed a baby while car is in motion.

Children must be secured in appropriate restraints at all times when the car is in motion. Children travelling unrestrained and standing up in the car are in danger of serious injury or death. Traffic regulations in all states require children to be secured in child restraints or adult seat belts where available.

Plan your trip with frequent comfort stops to reduce stress on babies, young children and driver. Keep the car well ventilated to reduce heat stress. Car windows should be kept open to maintain a good flow of fresh air.

Never leave babies or toddlers in a stationary car because of the risk of heat exhaustion.

Ensure babies and toddlers are adequately shaded from direct sunlight through side or rear windows.

Check the car is ventilated by use opening windows or using the car's ventilation system taking in external air. Recirculation setting is not suitable for providing ventilation.

Be on guard against carbon monoxide poisoning which can occur through only a slight leak in the exhaust system while travelling in a closed car.

Securely stow all heavy objects, feeding bottles, etc. that could become missiles during an accident and cause injury to any occupant.

CLOTHING/BATHING

Since it is often warmer in the car, dress the baby in light clothing.

Do not harness an infant wrapped in a blanket or swaddled. Any blanket or wrap must only be placed over the harness and infant.

IN CASE OF ACCIDENT

If your restraint has been involved in a severe crash, you should destroy the restraint even if no damage is obvious. Some insurance companies offer vehicle insurance which covers or partially covers the replacement of your child restraint. Contact your insurance company for further details. Your insurance company may require you to keep the child restraint for assessment, **but do not use the child restraint after a severe crash**. To assist you in making an accident insurance claim cut the following statement and include it with your claim.

NOTICE TO INSURANCE COMPANY CHILD RESTRAINT INVOLVED IN AN ACCIDENT

All Britax Safe-n-Sound child restraints are manufactured to Australian/New Zealand Standards AS/NZS1754-2013 which require us to advise users of child restraints to "Destroy the entire restraint if it has been in use in a severe crash, even if no damage is obvious". The joint Australian/New Zealand Standards committee CS/85, advise that this statement applies whether a child was in the child restraint or not. A severe crash, we consider as being one where the main body structure of the vehicle is distorted.

There is no method of determining if the restraint has been damaged and we concur with the Australian/New Zealand Standards in recommending destruction of the child restraint.

This notice is to advise you of the requirements of the Australian/New Zealand Standards and our obligation in complying with the standards.

Please assist the owner of this restraint in their claim.

Britax Childcare Pty. Ltd.

(Incorporated in Victoria)

A.B.N 55 006 773 600

Head office and registered address:

99 Derby Road Sunshine Victoria 3020

PO Box 147 Sunshine Victoria 3020

Telephone: 1300 303 330

New Zealand Office:

Britax Childcare NZ Limited.

PO Box 100-247 Auckland 9

Telephone: 0508 688 822



IN CASE OF ACCIDENT

CRASH EXCHANGE

We would never want you to experience an accident, but unfortunately accidents do happen.

If you experience an accident you may be eligible for a free replacement.

The Britax Safe-n-Sound Crash Exchange Program is a voluntary program designed to ensure that our children are safe and that any seat that may have experienced a severe crash is taken out of the market.

There is no method of determining if the restraint has been damaged in a severe crash, so the restraint should be destroyed as the crash may reduce the child restraints ability to perform.

Since its inception in 2006, the Crash Exchange program has helped 100's of families ensure that their children have new restraints and that the restraints are not sold second hand placing others at risk.

Our Crash Exchange Terms and Application form are accessible on our website. Please visit www.britax.com.au for further information.



**AUSTRALIA**

Britax Childcare Pty. Ltd.
A.B.N 55 006 773 600

Head office and registered address

99 Derby Road, Sunshine, Victoria 3020.
PO Box 147 Sunshine, Victoria 3020.

Customer Service 1300 303 330

Email au-custserv@britax.com

www.britax.com.au

NEW ZEALAND

Britax Childcare (NZ) Ltd.

Customer Service 0508 688 822

Email nz-custserv@britax.com

www.britax.co.nz

INTERNATIONAL ENQUIRIES

Contact your local Distributor.



The Safe-n-Sound trademark and other trademarks are the property of Britax Childcare Pty. Ltd. (Australia).
The BRITAX trademark is the property of Britax Childcare Holdings Ltd, UK.
We reserve the right to alter this product without notice.
© 1995-2014 Britax Childcare Pty. Ltd. This product is covered by Australian and overseas
Patent applications. Patents pending.